

Discovery of two new polars evolved past the period bounce

Tim Cunningham¹,¹★† Iliaria Caiazzo^{2,3}, Gracjan Sienkiewicz⁴, Peter J. Wheatley^{5,4,5},
Boris T. Gänsicke^{6,4,5}, Kareem El-Badry³, Riccardo Arcodia⁶, David Charbonneau¹, Liam Connor¹,
Kishalay De⁶, Pasi Hakala⁷, Scott J. Kenyon¹, Sumit Kumar Maheshwari⁸, Antonio C. Rodriguez³,
Jan van Roestel⁹ and Pier-Emmanuel Tremblay^{4,5}

¹Center for Astrophysics, Harvard & Smithsonian, 60 Garden St., Cambridge, MA 02138, USA

²Institute of Science and Technology Austria, Am Campus 1, A-3400 Klosterneuburg, Austria

³Division of Physics, Mathematics and Astronomy, California Institute of Technology, Pasadena, CA91125, USA

⁴Department of Physics, University of Warwick, Coventry, CV4 7AL, UK

⁵Centre for Exoplanets and Habitability, University of Warwick, Gibbet Hill Road, Coventry CV4 7AL, UK

⁶MIT-Kavli Institute for Astrophysics and Space Research, 77 Massachusetts Avenue, Cambridge, MA 02139, USA

⁷Finnish Centre for Astronomy with ESO (FINCA), Quantum, University of Turku, Turku, FI-20014, Finland

⁸Hamburger Sternwarte, University of Hamburg, Gojenbergsweg 112, D-21029 Hamburg, Germany

⁹Anton Pannekoek Institute for Astronomy, University of Amsterdam, NL-1090 GE Amsterdam, the Netherlands

Accepted 2025 March 24. Received 2025 March 16; in original form 2025 January 3

ABSTRACT

We report the discovery of two new magnetic cataclysmic variables with brown dwarf companions and long orbital periods ($P_{\text{orb}} = 95 \pm 1$ and 104 ± 2 min). This discovery increases the sample of candidate magnetic period bouncers with confirmed sub-stellar donors from four to six. We also find their X-ray luminosity from archival *XMM-Newton* observations to be in the range $L_X \approx 10^{28}$ – 10^{29} erg s⁻¹ in the 0.25–10 keV band. This low luminosity is comparable with the other candidates, and at least an order of magnitude lower than the X-ray luminosities typically measured in cataclysmic variables. The X-ray fluxes imply mass transfer rates that are much lower than predicted by evolutionary models, even if some of the discrepancy is due to the accretion energy being emitted in other bands, such as via cyclotron emission at infrared wavelengths. Although it is possible that some or all of these systems formed directly as binaries containing a brown dwarf, it is likely that the donor used to be a low-mass star and that the systems followed the evolutionary track for cataclysmic variables, evolving past the period bounce. The donor in long period systems is expected to be a low-mass, cold brown dwarf. This hypothesis is supported by near-infrared photometric observations that constrain the donors in the two systems to be brown dwarfs cooler than ≈ 1100 K (spectral types T5 or later), most likely losing mass via Roche Lobe overflow or winds. The serendipitous discovery of two magnetic period bouncers in the small footprint of the *XMM-Newton* catalogue implies a large space density of these type of systems, possibly compatible with the prediction of 40–70 per cent of magnetic cataclysmic variables to be period bouncers.

Key words: accretion, accretion discs – binaries: general – stars: magnetic fields – novae, cataclysmic variables – white dwarfs.

1 INTRODUCTION

Cataclysmic variables (CVs) are binary stars in which a white dwarf accretes from a low-mass companion, typically a late-type main-sequence star or a sub-stellar companion. In the standard model of CV evolution, CVs with a main-sequence companion evolve toward shorter periods because of angular momentum losses due to a combined effect of magnetic braking and gravitational wave emission, following a track that is mostly determined by the mass of the stellar donor (e.g. Knigge, Baraffe & Patterson 2011). At longer periods, magnetic braking is thought to dominate angular momentum

losses, while at periods below 2 h, the dominant contribution is thought to be from gravitational wave emission, although there is evidence that residual magnetic braking plays an important role (Belloni et al. 2020). As the CV reaches the period minimum (at about 80 min, Faulkner 1971; Paczynski 1981; Knigge et al. 2011) and the donor continues to lose mass, the thermal time-scale of the donor becomes larger than the time-scale of mass-loss. This means that the donor, no longer in thermal equilibrium, ceases to shrink as it loses mass. As the donor becomes increasingly degenerate, its radius increases in response to mass-loss, and the system evolves back towards longer orbital periods to accommodate the larger donor. It is predicted that there should be a large number of ‘period-bounce’ CVs in the Galaxy, with estimates varying from 40–70 per cent of the whole CV population (Kolb 1993; Goliašch & Nelson 2015; Belloni et al. 2020; Pala et al. 2022). There have been very few

* E-mail: tim.cunningham@cfa.harvard.edu

† NASA Hubble Fellow.

period-bouncers discovered so far, however, probably due to the fact that they show lower accretion rates (and by proxy a lower X-ray luminosity, fainter accretion discs, and rarer outbursts) and their companions are faint sub-stellar objects, which are more difficult to detect. There are now close to two thousand CVs known of various types (Ritter & Kolb 2003; Inight et al. 2023), but only about 25 have been confirmed to be period bouncers (Guidry et al. 2021; Muñoz-Giraldo, Stelzer & Schwöpe 2024). From a volume-limited sample of CVs within 150 pc, Pala et al. (2020) estimated the period-bounce population accounts for some 7–14 per cent of the total observed CV population. Thanks to eROSITA, this volume-limited sample has been recently updated, including a misclassified object and a new discovery, bringing the fraction close to 25 per cent, reducing the discrepancy with theoretical predictions (Rodríguez et al. 2024). It has been recently suggested that the discrepancy between the observed and predicted fraction of bouncers might be due to the fact that in many CVs the white dwarf could become magnetic after the bounce. In this scenario, after the magnetic field emerges, the connection between the field of the white dwarf and that of the secondary would cause the system to detach and accretion to stop. The predicted number of period bouncers would therefore be reduced by 60–80 per cent (Schreiber, Belloni & van Roestel 2023). This prediction hinges on the assumption that strong magnetic fields in white dwarfs can either be created (as for example through the crystallization dynamo; Isern et al. 2017) or emerge to the surface (as for example through diffusion of fossil fields; Camisassa et al. 2024) at white dwarf cooling ages of a few Gyr.

White dwarfs have been detected to have magnetic fields ranging from a few kG to hundreds of MG (Ferrario, de Martino & Gänsicke 2015; Bagnulo & Landstreet 2019) and at least 20 per cent of isolated white dwarfs have detectable magnetic fields (Bagnulo & Landstreet 2020). Magnetic fields in accreting systems, if strong enough, can disrupt the flow in the accretion disc, funneling infalling material along field lines to the magnetic pole, or poles, of the white dwarf. CVs containing magnetic white dwarfs are usually divided in two categories depending on the strength of the field and on the relation between the spin period of the white dwarf and the orbital period. When the field is lower than a few MG and the spin period of the white dwarf is not synchronized with the orbital period, the system is called an intermediate polar (or IP). In these type of systems, accretion tends to spin up the white dwarf; also, they usually show the presence of a truncated disc. In CVs with larger fields ($B \gtrsim 10$ MG), called polars, the disc is often completely disrupted and the material flows directly from the first Lagrange point (L_1) along magnetic field lines to the surface of the white dwarf. In these systems, torques between the magnetic moment of the white dwarf and that of the companion star tend to synchronize the rotation period of the white dwarf with that of the orbit. Magnetic CVs with field strengths $B \gtrsim 1$ MG have been found in population studies to account for approximately one third of the total CV population (Pala et al. 2017; Inight et al. 2023). Among the 25 confirmed or candidate period-bounce CVs (Guidry et al. 2021; Kawka et al. 2021; Muñoz-Giraldo et al. 2024; Rodríguez et al. 2024), only seven have a detected magnetic field (see Table 6). It has been predicted from simulations that the number of magnetic period-bouncers may be lower by 10 per cent compared to their non-magnetic counterparts (Belloni et al. 2020), but this is still at odds with the current population, unless selection effects disfavour magnetic period bouncers.

Low accretion rates ($\lesssim 10^{-13} M_{\odot}$) are observed in three different types of magnetic CVs: polars in a transient low-accretion state, pre-polars and period bouncers. The former are normal polars, i.e. polars with a stellar companion filling its Roche lobe, that are

sometimes observed to transition to prolonged states (days to years) with significantly lower accretion rates than expected for Roche lobe overflow (RLOF; Schwöpe et al. 2002; Kafka & Hoard 2009). The reason behind this transition is poorly understood; it has been suggested that magnetic spots on the donor are moving past L_1 , interrupting the flow (Livio & Pringle 1994), but this explanation is hard to reconcile with the extended low states observed in some polars. An example is the polar EF Eri, which was in a low state for almost 26 yr between 1997 and late 2022 (Wheatley & Ramsay 1998; Howell et al. 2006; Filor et al. 2024) (EF Eri could also be a period bouncer, see Section 4.4). Many systems that were initially interpreted as low-state polars (e.g. Reimers, Hagen & Hopp 1999; Reimers & Hagen 2000; Schmidt et al. 2005a) were later shown to be pre-polars (Tout et al. 2008; Schwöpe et al. 2009): magnetic white dwarfs whose stellar donor is underfilling its Roche lobe. In these systems, the low accretion rate is due to the fact that accretion is driven by winds from the stellar companion, rather than RLOF, and the companion main-sequence star is usually clearly detected. This mechanism produces a lower mass-loss rate from the donor. These systems are often detected thanks to their strong cyclotron emission, often at optical wavelengths (see Parsons et al. 2021; van Roestel et al. 2024, and references therein). Pre-polars might be magnetic CVs in which Roche lobe-filling accretion has not started yet; alternatively, it has been suggested that pre-polars are CVs in which the white dwarf has recently become magnetic due to the so-called crystallization dynamo (Isern et al. 2017), and the connection between the white dwarf’s magnetic field with that of the secondary star has caused the binary to detach, due to synchronization torques and reduced angular momentum loss (Schreiber et al. 2021).

Finally, low accretion rates are expected in polars that have evolved past the period bounce: in these systems, angular momentum losses, which are thought to be driven only by weak gravitational wave emission, lead to a slow increase in the orbital period and a low mass-transfer rate, similar to the non-magnetic period-bouncers (e.g. Pala et al. 2018; Inight et al. 2023). Other than EF Eri, a few candidate magnetic period bouncers are known with periods close to the period minimum, low accretion rates, and possible sub-stellar companions (Breedt et al. 2012): SDSS J151415.65+074446.5, SDSS J125044.42+154957.4, and V379 Vir (see also Section 4.4). These three candidate period-bouncers were confirmed to be currently accreting owing to the detection of X-rays in *XMM-Newton* and eROSITA observations (Muñoz-Giraldo et al. 2023). Also discovered via X-ray emission in eROSITA, 1eRASS J054726.9+132649 was confirmed by Rodríguez et al. (2024) as a magnetic CV evolved past the period minimum to a period of 94 min. SMSS J1606–1000 was recently discovered to have a sub-stellar companion and indication of ongoing accretion (Kawka et al. 2021), but no X-ray observations are available for the system. Finally, Guidry et al. (2021) discovered a candidate magnetic period bouncer with a significantly longer orbital period of 2 h and strong cyclotron features detected at optical wavelengths. This system also has not been targeted by X-ray observations, but the presence of cyclotron emission strongly suggests that accretion is taking place. Collectively, these systems yield a sample of seven magnetic, candidate period-bounce CVs, four of which have a confirmed sub-stellar companion (we present the previously known candidates in Section 4.4).

We here report the serendipitous discovery of two new magnetic period bouncers with very low accretion rates and long orbital periods (95–104 mins) identified in the *XMM-Newton* source catalogue (the 4XMM-DR13 release; Webb et al. 2020). In Section 2, we describe the *XMM* observations as well as the follow-up optical

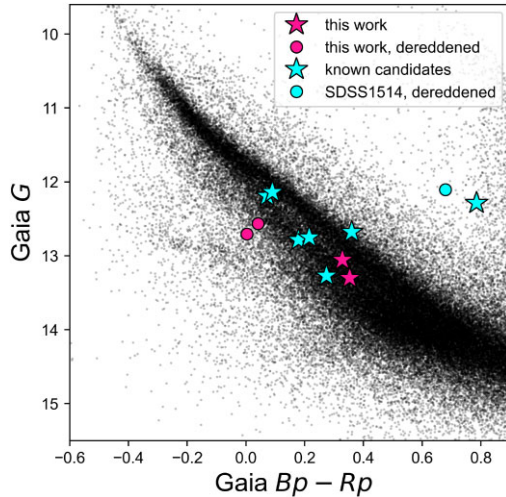


Figure 1. *Gaia* colour–magnitude position of the two systems presented in this study (the magenta star markers) and of the previously known candidate magnetic period bouncers (in cyan, see Table 6). Extinction at the location of the systems was obtained from the Bayestar19 dust map (Green et al. 2019), and the de-reddened location is shown for the two systems in this work and for SDSS 1514, the only ones to have appreciable extinction, as round markers. The de-reddened *Gaia* colours and magnitudes of the two systems in this work are very similar and consistent with white dwarfs at around 10 000 K. The location of SDSS 1514 far to the right of and above the white dwarf cooling sequence is due to the strong cyclotron emission in the R_p and G filters.

spectroscopy and photometry. In Section 3, we describe the observational constraints on the systems’ parameters, including the physical properties of the white dwarfs, the nature of the companion stars, the orbital geometries and accretion rates. In Section 4, we discuss our interpretation of the nature of the systems, possible evolution scenarios and the implications of the discovery on the population of period bouncers. In Section 5, we summarize our results.

2 DISCOVERY AND OBSERVATIONS

2.1 Discovery in the 4XMM-DR13 source catalogue

Here, we report the serendipitous discovery of two new magnetic CVs: WD J182047.71–042253.08 (*Gaia* DR3 4269487247901922176, hereafter WD J1820) and WD J190700.40+205226.96 (*Gaia* DR3 4519789940386173696, hereafter WD J1907). The two systems were identified as part of a search for soft X-ray emission from likely isolated white dwarfs in the *XMM–Newton* source catalogue (Webb et al. 2020) that will be published in a companion article. We performed a cross-match between high-probability white dwarf candidates (Gentile Fusillo et al. 2019, 2021) identified in *Gaia* DR3 (Gaia Collaboration 2018) and the *XMM–Newton* source catalogue, and followed up with optical spectroscopy the best candidate X-ray emitting white dwarfs that lacked a previous spectroscopic identification.

WD J1820 and WD J1907 appear as blue and faint objects and therefore as fairly massive, isolated white dwarfs in the *Gaia* colour–magnitude diagram (see Fig. 1) and are coincident (within 4 arcsec) with two soft X-ray sources in the *XMM* catalogue (see Fig. 2). The source coincident with WD J1820 was detected serendipitously via one *XMM–Newton* observation (obsid: 0821890101; PI: Mereghetti) on the 24th of September 2018 with an exposure time of 33 ks, targeting the pulsar PSR B1818-04. The other system studied in this

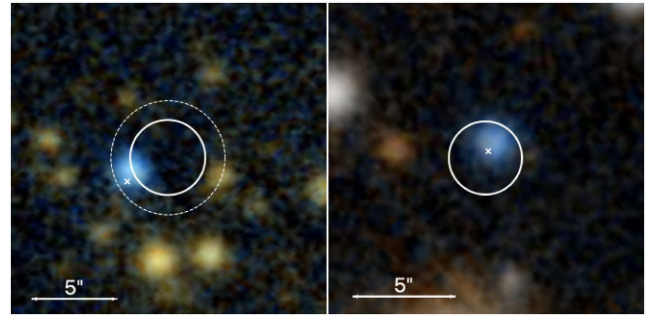


Figure 2. PanSTARRS DR1 colour image with bands g and z for WD J1820 (left) and WD J1907 (right). From *Gaia* astrometry, the sky position of the white dwarf at the mean epoch of the *XMM–Newton* observations is indicated with the white cross. The solid white circle is centred on the 4XMM-DR13 source position, with a radius equal to the 68 per cent confidence radius on the source position, as provided in the 4XMM-DR13 catalogue. In the left panel, the dashed white circle indicates the 90 per cent confidence radius.

Table 1. X-ray source counts for WD J1820 and both observations of WD J1907 as reported in the 4XMM-DR13 serendipitous source catalogue for the 0.2–12 keV band. We include the source counts report for the three EPIC cameras (PN, MOS1, and MOS2), as well as the combined EPIC counts and count rates.

	WD J1820	WD J1907	WD J1907
Obsid	0821 890 101	0840 843 401	0860 303 001
PN counts	27 ± 9	51 ± 10	36 ± 9
M1 counts	9 ± 5	17 ± 5	12 ± 6
M2 counts	15 ± 7	8 ± 5	11 ± 5
EPIC counts	51 ± 12	75 ± 13	59 ± 12
EPIC count rate (10^{-3} cts s^{-1})	2.8 ± 0.7	7.5 ± 1.3	4.4 ± 0.9

work, WD J1907, was detected in two *XMM–Newton* observations on the 27th of September 2019 (obsid: 0840843401; PI: Stelzer) and on the 20th of September 2020 (obsid: 0860303001; PI: Stelzer) with exposure times of 32.4 and 31.7 ks, respectively, targeting the nearby early M-dwarf PM H19072+2052. For WD J1820, the source catalogue reports a total of 51 source counts across all three European Photon Imaging Camera (EPIC; Turner et al. 2002) cameras, whilst for the two observations of WD J1907 in 2019 and 2020, the source counts were 75 and 59, respectively. The source counts in each camera and total count rates are provided in Table 1. For WD J1907, simultaneous observations to the EPIC X-ray cameras were obtained in the UV with the Optical Monitor (see Section 2.3). After correcting for proper motion, the sky separation between the *Gaia* position and X-ray source position is $3 \pm 2'$ and $0.4 \pm 1.7'$ for WD J1820 and WD J1907, respectively.

Fig. 2 shows a PanSTARRS DR1 colour image of WD J1820 and WD J1907 on the left and right, respectively. The 4XMM-DR13 source position is indicated by the white circle, which is centred on the catalogue sky position and has a radius equivalent to the 68 per cent confidence radius on the source position as defined by the source catalogue. The sky position of the two *Gaia* white dwarf candidates at the time of the *XMM–Newton* observations is shown as white crosses (the position has been corrected for proper motion to the mean epoch of the *XMM–Newton* observations). We find that WD J1907 is consistent to within 1σ , whilst WD J1820 is well within the 90 per cent confidence interval on the source position. Given that the two systems presented here both exhibit multiple additional

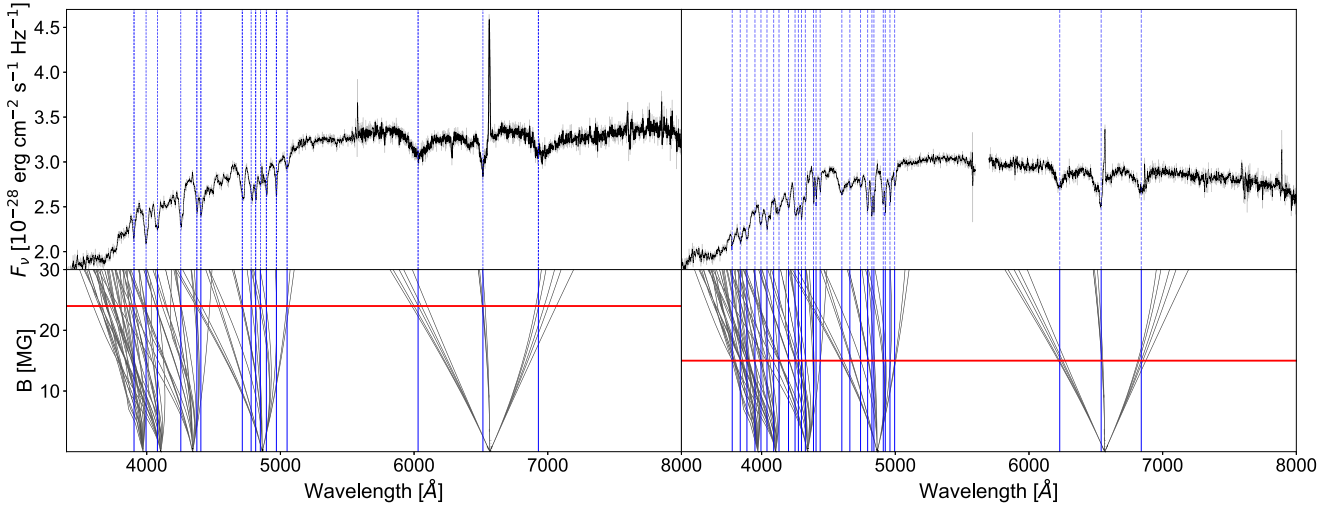


Figure 3. Phase-averaged optical spectra from Keck/LRIS of the two discovered systems with fits to the Zeeman split H absorption lines. Left and right panels show the spectra of WD J1820 and WD J1907, respectively. Both spectra show Zeeman split hydrogen Balmer absorption lines. The magnetic field strength is estimated by comparing the absorption line wavelengths with all bound–bound transitions at different field strengths (Kemic 1974). We find the estimated field strength to be $B = 24$ and 15 MG for WD J1820 and WD J1907, respectively. The spectra also show a narrow $H\alpha$ emission line around 6563 \AA . The narrow feature implies the line is not formed at the white dwarf surface. Time-series spectroscopy reveals this line is consistent with being formed on the irradiated surface of a companion (see Figs 4–5).

observational signatures associated with accretion—namely cyclotron emission, narrow emission lines, and binary companions—the X-ray association is sufficiently robust to confirm ongoing accretion in the systems.

2.2 XMM–Newton observations

From the *XMM–Newton* Science Archive (Sarmiento et al. 2019), we acquired the observation data files for the EPIC cameras PN and MOS (M1 and M2). The sky position of the two sources fell on to the chip for all three EPIC cameras in all three observations (one observation for WD J1820, and two for WD J1907). From our analysis, we exclude the first PN exposure of WD J1907 after visual inspection reveals the source fell near the edge of one of the PN chips, and suffers from contamination. The EPIC data was reduced using v21.0.0 of the Science Analysis Software (SAS) designed for reduction of *XMM–Newton* data (Gabriel et al. 2004). We filtered the event files using the routine `evselect` and Good Time Intervals (GTI) that were defined with standard defaults and thresholds on the count rate of 0.6 counts/s for PN and 0.35 counts/s for MOS, chosen by visual inspection of the each observation. This procedure resulted in total effective exposure times of 21.0 ks (PN) and 28.2 ks (M1+M2) for WD J1820, and 27.1 ks (PN) and 40.2 ks (M1+M2) for WD J1907. We extracted spectra for the sources and adjacent background regions using `evselect`, with background regions placed on the same chip as the sources. The source and background aperture radii were 20 arcsec and 90 arcsec, respectively. The X-ray spectral analysis is presented in Section 3.5.

2.3 Keck/LRIS spectroscopy

We obtained optical spectra using the Low-Resolution Imaging Spectrometer (LRIS; Oke et al. 1995) on the Keck I Telescope. We used the R600/4000 grism ($R \approx 1100$) for the blue arm and the R400 grating ($R \approx 1000$) for the red arm, covering a wavelength range of approximately 3200 – 10000 \AA . A standard long-slit data reduction

procedure was performed with the LPIPE pipeline¹ (Perley 2019). During the first night, on 2023 May 23, we obtained two 15-min exposures for each target; the spectra revealed two highly magnetized white dwarfs and a narrow $H\alpha$ emission around the non-magnetic rest wavelength that appeared to vary in both objects between the two exposures. We obtained an additional eight consecutive 15-min spectra for each target on 2023 June 16 and 17. The additional spectra confirmed that the narrow emission line is variable both in strength and radial velocity on a period of about 100 min in both systems, with maximal Doppler shifts of respectively 200 and 350 km s^{-1} . Fig. 3 shows the combined, phase-averaged spectra for the two white dwarfs, while Fig. 4 shows trailed spectrograms for both systems, centred on the H-alpha component at 6562.8 \AA . The high radial velocity amplitude of the emission line, its periodic modulation, and its narrow profile, suggest that it is originating at the surface of the companion, rather than from the surface of the white dwarf. The most likely explanation for this is that the line is formed at the illuminated face of the companion, irradiated by one or more accretion hotspots on the white dwarf. However, no features from a companion are present in the spectra up to 1 \mu m , indicating that the companion must be either a very late type star, or sub stellar object such as a brown dwarf.

2.4 Photometry

We collected photometric data on the two systems at all available wavelengths. For both objects, optical photometry is available from the Pan-STARRS PS1 survey (Chambers et al. 2016) and from *Gaia* DR3, which also provides the parallaxes and proper motions used in this study (Gaia Collaboration 2016, 2023). In addition, UV photometry for WD J1907 is available from *GALEX* in the NUV (Martin et al. 2005), and from the *XMM–Newton* Optical Monitor in the U, UVW1, and UVM2 filters at two different epochs, as it was obtained simultaneously with the EPIC camera X-ray data.

¹<http://www.astro.caltech.edu/~dperley/programs/lpipe.html>

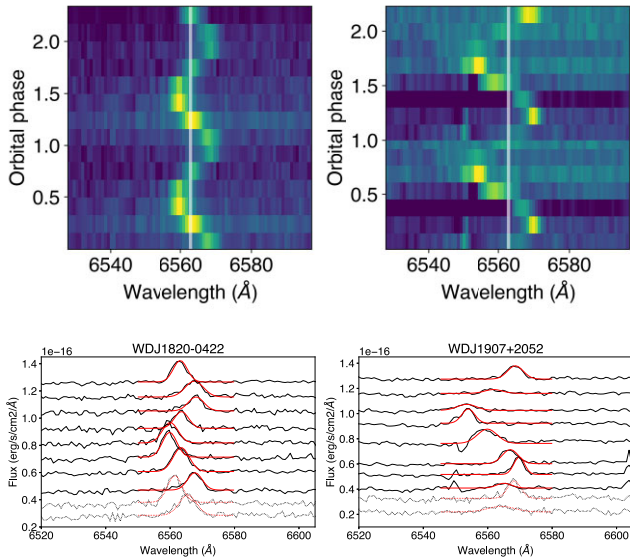


Figure 4. Top: trailed spectrograms centred on H-alpha at 6562.8 Å for the two newly discovered systems presented in this paper. The spectrograms have been phase-folded on periods of 95.3 and 103.8 min, on the left and right, respectively. Bottom: Gaussian fits to the H-alpha emission line for the eight 900-s Keck/LRIS spectra taken during the time series follow-up (solid), and the two 900-second consecutive spectra taken during the initial spectroscopic identification observations (dashed). The data are shown in black covering the full wavelength range in the figure, whilst the fitted Gaussians are shown in red, covering the wavelength range 6545–6580 Å. For clarity, the spectra and fits are given a vertical offset to separate them.

In the infrared, photometric data in the J , H , and K_s bands is available for WD J1820 from the United Kingdom Infrared Telescope (UKIRT) Infrared Deep Sky Survey catalogue (UKIDSS; Warren et al. 2007). Additionally, we obtained photometry in the J band for both systems using the Wide-Field Infrared Camera (WIRC; Wilson et al. 2003) on the 200-inch Hale Telescope at the Palomar Observatory. The full list of photometric observations used in this paper is presented in Table 2 and plotted in Fig. 6.

2.5 Photometric variability

In the infrared, the two J -band observations (WIRC and UKIDSS) of WD J1820 show strong photometric variability, most likely due to cyclotron emission (see Section 4.2). The SNR in the PS1 lightcurve is too low to detect variability, but the excess in PS1- y for WDJ1907 is likely caused by cyclotron emission as well. The magnetic field in the two systems is not high enough for cyclotron to contribute much in the optical, and we expect most of the variability to happen in the near IR. We analysed the optical light curves of the two systems in g and r band in the Zwicky Transient Facility archive (ZTF; Bellm et al. 2019). A Lomb–Scargle search reveals no strong indication of a periodic variability in either system. We cannot exclude a low-amplitude optical variability as both objects are rather faint, and the low signal-to-noise ZTF observations imply that only a modulation larger than about 10 per cent peak to peak can be detected.

In the UV, we only have data for WDJ1907. The XMM-OM observations show a dimming of over half a magnitude between the two epochs in U and UVW1, while the UVM2 observation (only available for the second epoch) is in agreement with the only *GALEX* observation. As we explain below, the second (dimmer) epoch is in agreement with the expected UV flux from the white dwarf. The

Table 2. Photometric measurements, *Gaia* parallaxes, and reddening measurements from the Bayestar19 dust map for the two systems. The optical and near-ultraviolet (NUV) data was used to obtain the white dwarf parameters, while the near-infrared (NIR) data was used to constrain the nature of the sub-stellar companion and to detect cyclotron emission.

		WD J1820	WD J1907
Pan-STARRS	g	20.13 ± 0.02	20.101 ± 0.012
	r	20.06 ± 0.03	20.05 ± 0.02
	i	19.96 ± 0.04	20.147 ± 0.012
	z	19.98 ± 0.05	20.14 ± 0.11
	y	–	19.82 ± 0.19
<i>GALEX</i>	NUV	–	21.8 ± 0.4
XMM-OM	U obs. 1	–	20.032 ± 0.043
	U obs. 2	–	20.761 ± 0.104
	UVW1 obs. 1	–	20.168 ± 0.083
	UVW1 obs. 2	–	20.68 ± 0.081
	UVM2 obs. 2	–	21.39 ± 0.29
WIRC	J	20.19 ± 0.10	20.76 ± 0.13
UKIDSS	J	18.83 ± 0.11	–
	H	18.89 ± 0.15	–
	K_s	20.1 ± 0.4	–
Parallax		4.7 ± 0.5	4.2 ± 0.4
$E(B - V)$		0.23 ± 0.09	0.19 ± 0.08

brightening could be due to a transient phenomenon, like a flare, or to periodic variability, as for example if a small hotspot is present on the surface of the white dwarf. Similarly to EF Eri (Szkody et al. 2006; Schwöpe et al. 2007, see also section 4.4), the UV data during the bright phase can be modelled by a small, $\approx 20\,000$ K hotspot; however, additional monitoring in the UV would be necessary to understand the source of variability.

3 ANALYSIS

3.1 White dwarf parameters from photometry

To determine the parameters of the two white dwarfs, we performed an SED-fitting to their optical (and UV) photometry, where we expect the white dwarf flux to dominate, using non-magnetic DA spectral models. We made use of the available optical photometry from PS1 and of *Gaia* DR3 parallaxes. In addition, we used *GALEX* NUV photometry, available only for WDJ1907. As the XMM UV photometry for WDJ1907 shows strong variability, possibly caused by flares or a hotspot (see Section 2.5), we do not include it in the fit. In the case of WDJ1907, the reddest PS1 filter, PS1- y , shows a strong excess which is most likely due to cyclotron emission (see below), so we exclude this data point from our fitting.

For the fitting, we employed the 1D atmosphere models for non-magnetic DA (hydrogen dominated) white dwarfs developed by Tremblay, Bergeron & Gianninas (2011). To account for extinction, we applied reddening corrections to the synthetic spectra using the Cardelli, Clayton & Mathis (1989) extinction curves.² From the corrected models, we computed synthetic photometry using the PYPHOT package.³ For the fit, we used a Levenberg–Marquardt algorithm, and the free parameters were the effective temperature

²The Cardelli et al. (1989) extinction curves are available at <https://www.stsci.edu/hst/instrumentation/reference-data-for-calibration-and-tools/astronomical-catalogs/interstellar-extinction-curves>.

³The PYTHON-based photometry package, PYPHOT, is available at <https://mfouesneau.github.io/docs/pyphot/>.

Table 3. Physical parameters of the two white dwarfs from fitting the optical (and UV) SEDs. Additionally, for WD J1820, we list the result of fitting the optical and IR data with combined white dwarf plus brown dwarf models.

	WD J1820	WD J1907
T_{eff} (K)	9200 ± 2400	11600 ± 2100
R_{WD}/D (km pc $^{-1}$)	35.7 ± 6.2	26.7 ± 1.5
$E(B-V)$	0.19 ± 0.17	0.19 ± 0.08
R_{WD} (km)	7600 ± 1500	6200 ± 600
M_{WD} (M_{\odot})	$0.75^{+0.20}_{-0.18}$	$0.92^{+0.08}_{-0.07}$
T_{eff} WD (K)	9300 ± 2400	–
T_{eff} BD (K)	1100 ± 200	–
R_{WD}/D (km pc $^{-1}$)	35.2 ± 6.2	–
$E(B-V)$	0.19 ± 0.16	–
R_{WD} (km)	7500 ± 1500	–
M_{WD} (M_{\odot})	$0.76^{+0.19}_{-0.18}$	–

of the white dwarf, T_{eff} , the ratio between the radius of the white dwarf, R_{WD} , and its distance from Earth, D , as well as the interstellar reddening, $E(B - V)$. For the reddening, we imposed a Gaussian prior based on the Bayestar19 dust map (Green et al. 2019). From the ratio R_{WD}/D obtained from the fit, we calculated the radius of the white dwarf using the *Gaia* parallax and parallax error. From the radius and effective temperature, we obtained a mass and cooling age using DA evolutionary models (Bédard et al. 2020). The results are listed in Table 3 and the best-fitting models are shown in the upper panels of Fig. 6. We can see that the model fitted to the PS1 and *GALEX* photometry for WD J1907 is in agreement with the XMM-OM data during the second (dimmer) observation.

3.2 White dwarf magnetic fields

In Fig. 3, we identify the observed absorption features in both objects as Zeeman split Balmer components, comparing them to all bound-bound transitions at different field strengths (Kemic 1974). From the splitting, we estimate the average magnetic field on the surface to be about 24 MG for WD J1820 and 15 MG for WD J1907; the magnetic field at the pole is likely to be higher. These field strengths in excess of 10 MG indicate that the systems are likely polars. Additionally, we have no indication of the presence of an accretion disc in the form of broad or double-peaked emission lines or excess in the optical and UV. It would be interesting to see if the white dwarfs in these systems that have been evolving for Gyrs past the period bounce (see Section 4.3) are still synchronized with the orbital period, as it is usually seen in polars. Unfortunately, we have currently no evidence on the rotation period of the white dwarfs; however, if light curves in the IR are obtained, they would reveal the periodicity of the cyclotron emission from the white dwarfs and confirm their spin periods. We did perform a time-series analysis of the X-ray event files. Whilst tentative periods were identified on or near the orbital ($H\alpha$) period, the signal-to-noise was inadequate to draw out a confident detection of a period.

3.3 Orbital parameters

The periodic modulation in intensity, radial velocity amplitude, and small equivalent width of the $H\alpha$ emission line suggest that the line is created on the irradiated face of the sub-stellar companion, as seen in other low-state polars and period bouncers (Schmidt et al. 1996; Breedt et al. 2012; Kawka et al. 2021). We can therefore study its modulation to extract the orbital parameters of the binary. We fit

Gaussian profiles to the narrow $H\alpha$ emission line detected in all ten spectra taken for both systems. In the fitting procedure, we allow for four free parameters: the central wavelength, amplitude, standard deviation, and continuum level. The equivalent width does not show significant variations between observations in either system, as is expected from irradiation; we therefore performed a global fit to the emission line in all observations, keeping the equivalent width the same across all observations, and we found no significant change in the other fitted parameters. The central wavelength gives a measurement of the radial velocity, the amplitude and standard deviation provide a measurement of the integrated line flux, and the continuum level allows to remove the contribution of the white dwarf continuum. The Gaussian fits to the time-series data are shown in Fig. 4. The data is shown in black, and the Gaussian fits in red. The two initial identification spectra for each system are shown at the bottom of the plot with fainter lines. The eight consecutive follow-up spectra are shown above with emboldened lines. In the following we study the time dependence of the fitted Gaussian parameters.

3.3.1 Orbital period

We find the orbital periods of the two systems by fitting a sinusoid to the radial velocities of the $H\alpha$ emission obtained from the eight consecutive spectra for each system. We find the best-fitting orbital periods for the two systems to be $P_{\text{orb}} = 95 \pm 1$ and 104 ± 2 min, for WD J1820 and WD J1907, respectively. The radial velocities and the best-fitting sinusoids are shown in Fig. 5. Although we do not use the initial identification spectra in the fit, as they are separated by hundreds of periods, we show their radial velocity measurements in open circles, phase-folded at the best-fitting periods.

3.3.2 Phase offset

In Fig. 5, the middle panels show the time-dependent Gaussian amplitude of the $H\alpha$ emission line. In blue, we show a sinusoidal fit to this data, in this instance fitting just three parameters: the amplitude, phase, and mean y -value. We fix the period of the sinusoid to that measured from the radial velocities. The idea behind this test is to constrain the phase offset between the radial velocity and the amplitude. The expectation is that the phase of the amplitude should be a quarter phase behind the radial velocity curve. Assuming the system to be tidally locked, the irradiated surface of the companion brown dwarf, where the $H\alpha$ line is expected to be formed, should be maximally visible when the brown dwarf is behind the white dwarf. At this point, which we call phase $\phi = 0.5$, the line-of-sight velocity of the brown dwarf is zero. At phase $\phi = 0$, the irradiated surface of the brown dwarf should be facing away from the observer, at which point the measured $H\alpha$ line intensity ought to be at a minimum. In the middle panel, we indicate in blue text the phase offset between the fit to the radial velocities and the fit to the amplitude. We find the best-fitting phase offset to be $\Delta\phi = 0.41 \pm 0.05$ and 0.17 ± 0.05 , for WD J1820 and WD J1907, respectively. We also show the expected curve with an imposed phase offset of $\Delta\phi = 0.25$ (dotted orange line). We find that the phase offset in WD J1907 is consistent with the expected quarter phase within the errors. On the other hand, WD J1820, appears to show a larger phase offset, in which the peak amplitude of the $H\alpha$ line appears delayed by an additional 0.15 in phase with respect to the expected quarter value. In the bottom panel, we show the curve of integrated flux, rather than just the peak amplitude. We perform the same phase offset analysis and recover results that are consistent with those in the middle panel. Phase offsets

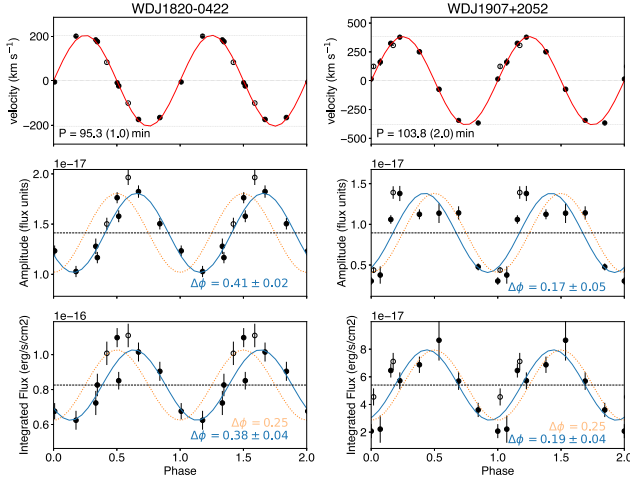


Figure 5. Observed variations in the parameters of the $H\alpha$ emission line compared to our best-fitting sinusoidal models for WDJ1820 (left) and WDJ1907 (right). The measurements shown originate from two consecutive 15-min spectra taken in 2023 June (open circles) and eight consecutive 15-min spectra taken in 2023 July (filled circles) for each object. Top: radial velocity of the emission line. The line (red) shows the best-fitting 4-parameter sinusoid, fitted only to the eight consecutive spectra (filled circles). The open circles are omitted from the fit and have been shifted in phase by a fixed amount for each system to match the RV curve. We find a sinusoidal period of $P_{\text{orb}} = 95.3 \pm 1.0$ min and of $P_{\text{orb}} = 103.8 \pm 2.0$ min for WDJ1820 (left) and for WDJ1907 (right), respectively. Middle: amplitude of the emission line above the local continuum. With the solid line (blue), we show a 3-parameter sinusoidal fit, where the period is fixed at the value obtained from the radial velocities (top panel), but the amplitude, phase and normalization are left free. Again, only the eight filled circles are included in this fit. The fitted offset in phase with respect to the top panel, $\Delta\phi$, is written in the panels with the associated 1σ uncertainty. The dotted line (orange) shows the same curve, but at a phase offset of a quarter period. Bottom: same as middle panel, but with the integrated flux over the H-alpha emission line instead of the amplitude.

have been observed in CVs with higher accretion rates (Beuermann & Thomas 1990), thought to originate from an illuminating source offset from the centre of mass. Such a geometry could arise if the source of irradiation is, for example, a hot stand-off shock sufficiently high above the white dwarf surface. Alternatively, an offset could be due to the accretion stream shielding part of the brown dwarf from the X-ray emission that is causing the irradiation.

3.3.3 Inclination

The inclination i of the system with respect to the line of sight affects the maximum and minimum amplitude in the $H\alpha$ line. Under the assumption that the night side of the brown dwarf produces no emission, in an edge-on system ($i = 90^\circ$) the $H\alpha$ emission should go to zero when the night side of the brown dwarf is facing our direction, i.e. at phase $\phi = 0$. We can therefore derive an estimation of the inclination of the binary as the inverse sine of the ratio between the maximum and mean flux in the line (see for example Beuermann & Thomas 1990; Schwöpe & Christensen 2010). In case some emission is produced beyond the irradiated hemisphere, i.e. on the night side of the companion, then this estimate becomes a lower limit. Performing this calculation on the measured mean flux and amplitude for the peak $H\alpha$ emission (middle panel of Fig. 5) yields a lower limit on the inclination of $i \geq (14 \pm 2)^\circ$ and $i \geq (28 \pm 10)^\circ$, for WDJ1820 and

WDJ1907, respectively. For the integrated fluxes (lower panel), we recover consistent lower limits of $i \geq (16 \pm 4)^\circ$ and $i \geq (32 \pm 6)^\circ$.

3.4 Constraints on the donors

To understand the nature of the companions, we obtained near-infrared photometry in the J band using the WIRC (Wilson et al. 2003) on the 200-inch Hale Telescope at the Palomar Observatory (see Table 2 and Fig. 6). For WDJ1820, photometric data in the J , H , and K_s bands is also available from the UKIDSS catalogue. A comparison between the WIRC and UKIDSS photometry shows a strong variation of at least a magnitude in J band, most likely due to cyclotron emission. The WIRC data in both objects is consistent with the white dwarf continuum, as inferred from optical and UV data (see Section 3.1), which tells us that the donor stars contribute very little in the J band. We here analyse the SED of the two objects including possible contributions from brown dwarf companions. For the brown dwarf models, we use the ATMO2020 synthetic atmospheres (Phillips et al. 2020) with a surface gravity of $\log g = 5$ (we find that using different values of $\log g$ does not change our results, as our fits are not very sensitive to the surface gravity).

For WDJ1907, the J -band data rules out almost any contribution from the companion. If we include the J -band data in the same SED fitting performed in Section 3.1 (i.e. assuming that only the white dwarf contributes significant flux) we obtain identical parameters for the white dwarf as from the optical and UV data alone (Table 3). In the lower right panel of Fig. 6, we show the best-fitting white dwarf model (in black); additionally, we plot the sum of the white dwarf model plus the hottest brown dwarf that would be still consistent with the J band at its 3σ brightest limit (cyan line). At the distance of the white dwarf, we find that the hottest brown dwarf allowed by the data, assuming a radius of about 1 Jupiter radius, has a temperature of 1000 K. We stress that this is not a fit but rather an upper limit. It is likely that the brown dwarf is actually much fainter.

The J -band flux in WDJ1820 is consistent with the continuum of the best-fitting white dwarf model to the optical data, but it allows also a small excess within one sigma. We therefore perform SED fitting with combined synthetic spectra from a white dwarf and a brown dwarf at the same distance. The temperatures of the two objects, the reddening and the ratio R_{WD}/D are left as free parameters (imposing a prior on the reddening as done in the other fits), while we impose the radius of the brown dwarf to be 1 Jupiter radius. The resulting parameters are listed in Table 3; the white dwarf parameters are consistent with the ones found in Section 3.1, while we find that the best-fitting temperature for the brown dwarf is 1100 ± 200 K, or a spectral type T5 (Faherty et al. 2016). As there could still be some contribution from cyclotron emission in our measured J -band photometry, this is still an upper limit on the brown dwarf temperature. In the lower left panel of Fig. 6, we show the best-fitting combined model in cyan, and just the synthetic white dwarf spectrum in black. Also, we show the brightest brown dwarf allowed within the 3σ limit of the J -band data, which has a temperature of 1300 K.

3.5 X-ray analysis

3.5.1 Spectroscopic fits

The X-ray spectral analysis was performed using v4.1.1 of the BXA (Buchner 2016) which connects the nested sampling algorithm, ULTRANEST (Buchner 2019) with an X-ray spectral fitting environment. For the spectral fitting environment, we adopt v12.13.1 of XSPEC

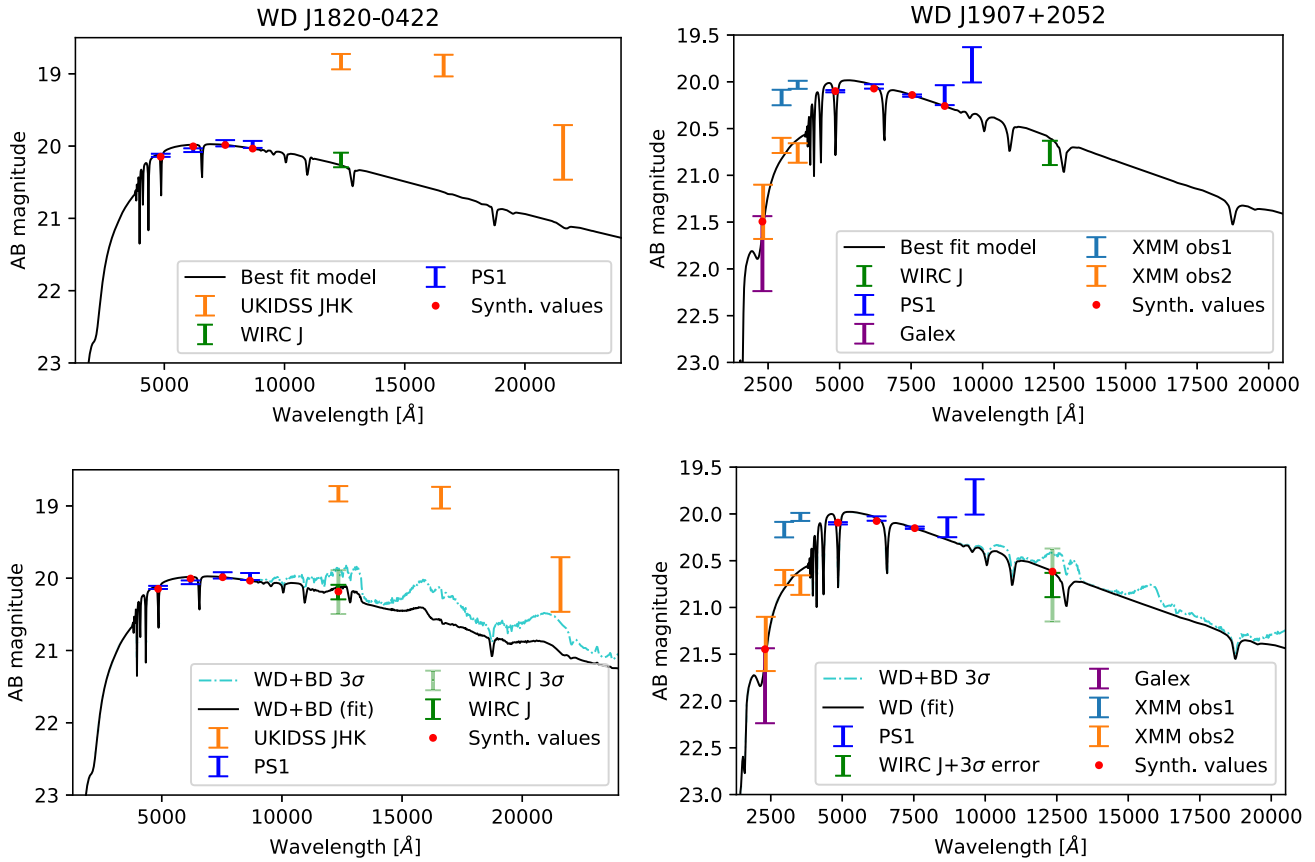


Figure 6. Photometric data available for the two systems: left WD J1820 and right WD J1907 (see Table 2). For WD J1820, the available data includes PS1 photometry in g , r , i , and z (in blue) and UKIDSS in J , H , and K_s (in yellow); in addition, we obtained WIRC J band (green). For WD J1907 we show PS1; g , r , i , z , and y (in blue), *GALEX* NUV (in purple), XMM-OM U, and UVW1 at two different epochs (light blue and yellow) and UVM2 only in the second epoch (yellow), plus our WIRC J band (green). Upper plots: best-fitting white dwarf models to the optical and UV data as solid black lines (see Section 3.1 and Table 3). The red dots indicate the synthetic magnitudes extracted from the best-fitting models. For WD J1820, only PS1 data was included in the fitting, while for WD J1907, PS1, and *GALEX*. Lower plots: both systems show evidence of cyclotron emission in the infrared; however, the two WIRC J -band observations were likely taken close to the minimum in the cyclotron emission, and can be used to constrain the contribution from the donor. For WD J1820, we show the fit to the PS1 and WIRC data using a combined white dwarf plus brown dwarf model (solid black line and red markers); additionally, we plot the combined WD+BD model with the brightest brown dwarf allowed by the 3σ error in the WIRC J -band magnitude (dot-dash cyan line). For WD J1907, the WIRC J -band data does not allow any excess with respect to the WD continuum; we thus cannot attempt a combined fit. We show only the best-fitting white dwarf model in black (we now include the J band in the fitting and we obtain the same best-fitting model as in the upper plot) and the combined white dwarf and brown dwarf (WD+BD) model with the brightest brown dwarf allowed by the 3σ error in the WIRC J magnitude (cyan).

(Arnaud 1996) operated by its PYTHON interface, PYXSPEC. We fit the background-subtracted EPIC PN and MOS spectra simultaneously, using the C-statistic (`cstat`) within XSPEC. The spectra were first binned using the optimal binning algorithm of Kaastra & Bleeker (2016). We fit the EPIC spectra with a single isothermal plasma model (APEC) and we include an absorption component (`tbabs`) to account for the Galactic n_H absorption. Fig. 7 shows the best-fitting plasma models for WD J1820 (left panels) and WD J1907 (right panels), for the EPIC PN (top panels) and MOS (bottom panels) spectra. For the Galactic absorption toward the targets, we employ the extinction estimate from the Bayestar dust map (Table 2) and convert it to hydrogen column density using the relation presented in Güver & Özel (2009). We obtain $N_H = (1.6 \pm 0.6) \times 10^{21} \text{ cm}^{-2}$ and $(1.3 \pm 0.6) \times 10^{21} \text{ cm}^{-2}$ for WD J1820 and WD J1907, respectively. We impose a uniform prior on the plasma temperature and a logarithmic uniform prior on the normalization.

3.5.2 Plasma temperature

Table 4 shows the best-fitting parameters from the spectroscopic fits of the two systems. For WD J1907, we find an APEC plasma temperature of $kT = 3.9^{+2.9}_{-1.4}$ keV, while for WD J1820, we find $kT = 2.0^{+1.7}_{-0.8}$ keV. The APEC plasma temperature for WD J1907 is a factor two higher than that for WD J1820. The measured X-ray luminosity is higher by the same factor, which may suggest some correlation between the accretion rate and plasma temperature. The measured temperatures are broadly consistent with the plasma temperature measured for the only other magnetic period-bounce CV observed with *XMM*; SDSS J1514, for which Muñoz-Giraldo et al. (2023) derived a temperature (and 90 per cent confidence limits) of $kT = 3.75^{+5.92}_{-2.55}$ keV. This is also broadly consistent with typical temperatures measured for of polars in low-states which tend to be around a few keV (Ramsay et al. 2004). Recent observations with the *Chandra X-ray Observatory* (Pence et al. 2001) of the planet-debris

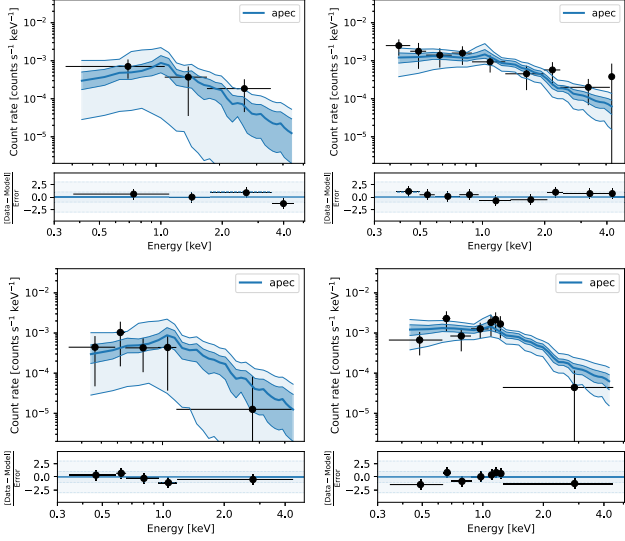


Figure 7. X-ray spectral fitting with BXA for WD J1820 (left) and WD J1907 (right), using data from both XMM EPIC detectors: PN (top) and MOS (M1 and M2 combined, bottom). For each source, we fit the PN and MOS spectra simultaneously with an absorbed, isothermal plasma (APEC; solid blue line) model. The shaded region corresponds to bands of uncertainty at 1 and 3 σ (darker and lighter respectively). The fitted spectra were binned using the optimal binning of Kaastra & Bleeker (2016). The spectra (black data points) have been re-binned to bins of higher significance for plotting purposes only.

Table 4. X-ray spectral parameters from the Bayesian X-ray Analysis (BXA) fit for WD J1820 and WD J1907. We employ a single-temperature plasma model (APEC) with an additional absorption component.

	Best fit	68 per cent		90 per cent	
		Low	High	Low	High
WD J1820					
tabs*apec					
kT_{apec} (keV)	1.96	1.14	3.64	0.76	4.45
$\text{norm}_{\text{apec}}$ (10^{-6})	1.90	0.91	3.23	0.48	3.97
nH (10^{20} cm^{-2})	12.80	7.21	18.70	3.44	22.00
WD J1907					
tabs*apec					
kT_{apec} (keV)	3.85	2.49	6.75	2.26	7.85
$\text{norm}_{\text{apec}}$ (10^{-6})	7.43	6.09	8.89	5.71	9.25
nH (10^{20} cm^{-2})	5.36	0.79	10.30	0.01	11.90

accreting white dwarf, G29–38 (Cunningham et al. 2022), yielded a measured plasma temperature of $kT = 0.5 \pm 0.2$ keV, providing evidence in support of the bombardment accretion scenario proposed by Kuijpers & Pringle (1982). In this model, at sufficiently low accretion rates, the accretion column is unable to support a stand-off shock, instead releasing the gravitational potential energy of the infalling material directly into the atmosphere of the white dwarf. This scenario was predicted to yield significantly lower plasma temperatures compared to those typically measured from stand-off shocks above the surface of accreting white dwarfs. Given that the systems presented in this work are among the lowest accretion rate CVs known, we consider this model in the context of these newly discovered systems. The temperature of the emitting plasma in the bombardment solution model was defined by (Kuijpers & Pringle 1982, see their equation 9) to depend simply on the accretor mass and radius. Adopting their prescription, the predicted plasma temperature for WD J1820 and WD J1907 is $kT = 0.87$ and 1.4 keV, respectively. The 90 per cent confidence limit on the X-ray plasma temperature

Table 5. X-ray properties of WD J1820 and WD J1907 derived from BXA fit to the data as part of this study. The measured X-ray flux and all derived X-ray parameters correspond to the energy band 0.25–10.0 keV. The 68 per cent and 90 per cent confidence limits on these parameters, and those for a soft band (0.25–2.0 keV), can be found in the Appendix Tables A1 and A2. For comparison, we list the lower limit on the cyclotron flux that we derive from the infrared photometry. We also include the bolometric X-ray luminosity, $L_{X,\text{bol}}$, computed by integrating the best fit, unabsorbed model across the 0.0001–100 keV energy band.

	WD J1820	WD J1907
Flux ($10^{-15} \text{ erg/s/cm}^2$)	$2.4^{+1.6}_{-1.1}$	$11.2^{+2.8}_{-3.4}$
Distance (pc)	213 ± 22	241 ± 23
Luminosity ($10^{28} \text{ erg s}^{-1}$)	$1.2^{+0.8}_{-0.6}$	$11.4^{+3.0}_{-3.4}$
M_{WD} (M_{\odot})	0.76 ± 0.2	0.92 ± 0.1
R_{\odot} (10^3 km)	7.5 ± 1.5	6.2 ± 0.7
\dot{M}_{X} (10^{11} g s^{-1})	$1.8^{+1.2}_{-0.8}$	$11.6^{+3.5}_{-3.1}$
\dot{M}_{X} ($10^{-14} M_{\odot} \text{ yr}^{-1}$)	$0.3^{+0.2}_{-0.1}$	$1.8^{+0.6}_{-0.5}$
kT (keV)	$2.0^{+1.7}_{-0.8}$	$3.9^{+2.9}_{-1.4}$
$L_{X,\text{bol}}$ ($10^{28} \text{ erg s}^{-1}$)	$2.6^{+1.2}_{-0.9}$	$10.0^{+2.7}_{-2.2}$
F_{cycl} ($10^{-15} \text{ erg/s/cm}^2$)	$\gtrsim 50$	–

(see Table 5) for WD J1820 is consistent with the prediction from the bombardment solution, but the APEC temperature for WD J1907 is higher. We note that the latter does have an accretion rate 1 dex larger than the former, which could give an indication of a transition from shock to bombardment. However, as we currently do not know how much of the accretion-induced luminosity is emitted at other wavelengths, it is too early to draw a conclusion. A detailed X-ray study of the growing sample of low accretion rate white dwarfs, bridging between period bouncers and white dwarfs accreting from planetary debris, would provide the possibility to investigate this transition.

3.5.3 Accretion rates

The X-ray luminosity is computed using the measured X-ray flux, and the distance determined from the *Gaia* parallax. The accretion rate is estimated following the prescription of Patterson & Raymond (1985), such that

$$\dot{M}_{\text{X}} = \frac{2}{A} L_{\text{X}} \frac{R_{\text{WD}}}{GM_{\text{WD}}}, \quad (1)$$

where the factor two accounts for half of the emitted photons being directed back towards the star (Kylafis & Lamb 1982) and the constant A encapsulates the fraction of the accretion-induced flux emitted outside of the XMM passband. In our derivation of the instantaneous accretion rate, we adopt the limiting case that no additional flux is carried at wavelengths outside of the XMM passband. In so doing, the quoted accretion rates are lower limits on the real accretion rate. We revisit the possibility of accretion-induced luminosity emitted at other wavelengths in Section 4.2. Table 5 shows the higher order X-ray properties derived from the measured X-ray flux. All the parameters in the table are derived from the X-ray flux in the broad-band 0.25–10.0 keV. We include additional bands and confidence limits in the Appendix Tables A1 and A2. We find WD J1907 to be 1 dex higher in luminosity, but just a factor 4 in accretion rate, owing to the higher mass and smaller radius of the white dwarf.

4 DISCUSSION

The strong magnetic fields, low accretion rates, long periods and the sub-stellar nature of the donors characterize these two systems as strong candidates to be magnetic period bouncers. As we discuss in section 4.4, there are very few known candidates, of which only three have confirmed sub-stellar donors, only one of which has a period above 90 min. Therefore, these newly discovered bouncers provide a great opportunity to study the evolution of CVs post period bounce. In this section, we discuss how our observations can constrain the properties of the systems.

4.1 Orbital dynamics

In Section 3.3, we derived orbital parameters from the time-series spectroscopy. Primarily, we derived a period and amplitude from the radial velocity of the H-alpha line, as well as a lower limit on the inclination from the H-alpha amplitude variation, without making assumptions on the accretion mechanism. Accretion in these systems could be due to the donors filling their Roche lobes. Alternatively, Schreiber et al. (2023) suggested that accretion in some magnetic period bouncers might be driven by weak winds from the donors, although a significant mass-loss through winds has never been detected in a brown dwarf. In this section, we will investigate if the orbital parameters are consistent with RLOF.

4.1.1 Brown dwarf mass

The absence of any excess in the optical and the stringent constraints on the companion's luminosity provided by the WIRC *J*-band photometry show that the donors in the two systems are cold brown dwarfs (see Section 3.4). This provides a limit on the mass of $M_{\text{donor}} < 0.08 M_{\odot}$ (assuming solar metallicity; for lower metallicities, the limit is slightly lower). We now explore the constraints on the mass of the donors from the orbital parameters, assuming that the donors are filling their Roche Lobes (we will analyse this assumption further in the next section).

For each system, we interpret the modulation period in the H α radial velocities as the orbital period of the system. The maximum radial velocity is the maximum velocity along the line of sight. The true maximum velocity depends on the inclination of the system. Following the methodology of (Breedt et al. 2012), the corrected maximum velocity is given by

$$K_2 = \frac{K_{\text{em}}}{1 - (1 + q)fR_2/a}, \quad (2)$$

where K_2 is the corrected radial velocity of the secondary, K_{em} is the measured radial velocity of the emission line, $q = M_2/M_1$ is the mass ratio of the secondary (M_2) and primary (M_1), a is the orbital separation, and fR_2 is the distance of the centre of light from the centre of mass of the secondary. For this final term, $0 \leq f \leq 1$ and $f = 0$ represents the case where the emission is uniform across the surface of the secondary. We adopt $f = 4/(3\pi)$, as shown by Wade & Horne (1988) to be appropriate for uniform emission from the day side, i.e. the irradiated side facing the white dwarf. The orbital separation, a , can be expressed as

$$a = \left(\frac{P_{\text{orb}}^2 G (M_1 + M_2)}{4\pi^2} \right)^{1/3}, \quad (3)$$

where P_{orb} is the orbital period and G is the gravitational constant. If the secondary is assumed to be undergoing RLOF, the radius of the secondary, R_2 , can be assumed to be equivalent to the Roche

radius. From Eggleton (1983), this radius is given by the following expression

$$R_2 = a \frac{0.49q^{2/3}}{0.6q^{2/3} + \ln(1 + q^{1/3})}. \quad (4)$$

Combining the above three equations together, the corrected velocity can be expressed as

$$K_2 = \frac{K_{\text{em}}}{1 - (1 + q)f \frac{0.49q^{2/3}}{0.6q^{2/3} + \ln(1 + q^{1/3})}}. \quad (5)$$

For WD J1820 and WD J1907, the corrected velocity, K_2 , is larger than the measured velocity, K_{em} , by ≈ 15 per cent and ≈ 10 per cent, respectively. Rearranging the above equation allows the secondary mass to be expressed as

$$M_2 = \left[\frac{4\pi^2 P_{\text{orb}}}{G} \left(\frac{K_2}{M_1 2\pi \sin i} \right)^3 \right]^{-1/2} - M_1. \quad (6)$$

The orbital period, P_{orb} , and white dwarf mass, M_1 have been measured independently by means of spectroscopy and photometry, respectively. The true orbital velocity of the secondary, K_2 , is given by equation (5), and depends only on the measured amplitude of the radial velocity, the mass of the primary and secondary, and the covering fraction of H-alpha emission. Since the secondary mass appears on both sides of equation (6) (inside the mass ratio q), we solve the equation using a numerical root finding algorithm.

In Fig. 8, we show the solution to equation (6). The colours correspond to the donor mass for a range of white dwarf masses (x -axis) and inclinations (y -axis). In the grey shaded region no solution can be found; this limit happens to correspond approximately to a Jupiter mass. The thick solid white line shows the upper limit for the mass of a brown dwarf at $0.08 M_{\odot}$. For reference, the thinner solid line indicates a Jupiter mass at $0.001 M_{\odot}$. We also show the best-fitting white dwarf mass and uncertainty for each system, determined from fitting the SED with pure-hydrogen model atmospheres (Section 3.1, Table 3). We estimate the dynamical brown dwarf mass by taking the mean mass of all solutions less than $0.08 M_{\odot}$, and a white dwarf mass within 1σ of the measured value. This yields a dynamical brown dwarf mass of $M_{\text{bd}} = 0.04 \pm 0.03 M_{\odot}$ for WD J1820 and $M_{\text{bd}} = 0.05 \pm 0.02 M_{\odot}$ for WD J1907. Our approach for deriving the uncertainty on the dynamical mass means that this estimation accounts for the uncertainty on the measured white dwarf mass and the range of allowable inclinations. Although it is not shown in this figure, we remind the reader that the observational lower limit on the inclination (see Section 3.3.3) was derived to be $i > (14 \pm 2)^\circ$ and $i > (28 \pm 10)^\circ$, for WD J1820 and WD J1907, respectively, also assuming that the emission was coming from the day side of the brown dwarf. The dynamical solutions are fully consistent with these limits.

In the case of WD J1907, the range of allowed inclinations implies a larger binary inclination (closer to edge-on). The horizontal white dashed line indicates an inclination of $i = 72^\circ$, above which the system would be expected to be eclipsing. From optical light curves in the ZTF archive, we find no evidence that either system is eclipsing, although these systems are at the edge of the sensitivity of ZTF. None the less, from dynamical arguments, the system would need to have a white dwarf mass less than $M_{\text{wd}} < 0.8$ to be eclipsing. This mass range is ruled out at 1σ by the photometric white dwarf mass, which for WD J1907 is $M_{\text{wd}} = 0.92 \pm 0.1 M_{\odot}$.

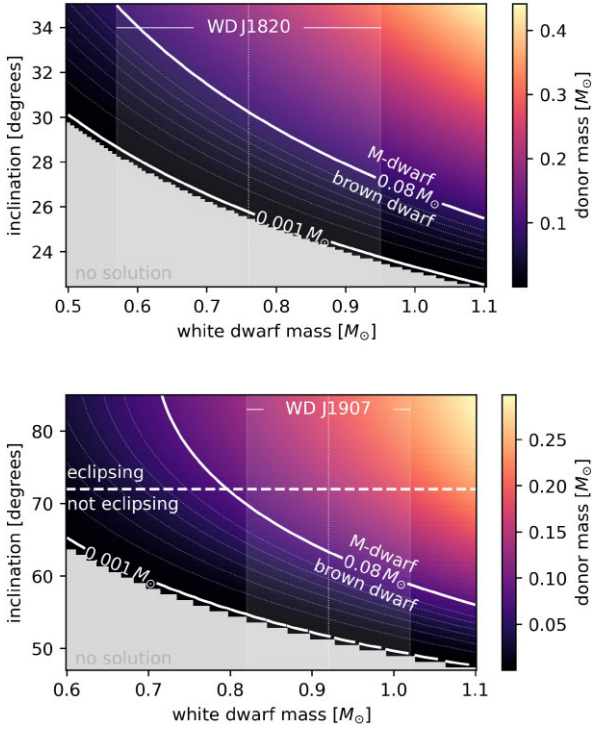


Figure 8. Dynamical donor mass for the measured orbital period of the two systems studied in this work. The colours indicate the dynamical mass resulting from the solution to equation (6). We solve this equation for a range of white dwarf masses on the x -axis, and a range of inclinations on the y -axis. For each white dwarf mass, the inclination has a lower limit, below which no solution can be found (grey shaded region). This limit happens to correspond approximately to a Jupiter mass for the brown dwarf companion. The thick solid white line indicates the upper limit on the mass of a brown dwarf. Below this mass, we show faint white contours at integer multiples of $0.01 M_{\odot}$. The vertical white line indicates the white dwarf mass, as inferred from the best-fitting parameters of the model atmosphere fit to the SED. The shaded region either side of the vertical line shows the 1σ uncertainty on the white dwarf mass measurement. The upper panel pertains to WDJ1820, whilst the lower panel shows the solutions for WDJ1907. In the case of WDJ1907, the range of allowed inclinations implies a larger binary inclination (more edge-on). The horizontal white dashed line indicates an inclination of 72° , the approximate inclination above which the system is expected to be eclipsing.

4.1.2 Roche lobe overflow

In this section, we consider whether the dynamical masses and radii derived are consistent with the mass–radius relation of non-accreting brown dwarfs. We preface this discussion with the caveat that, as the donor in this system is undergoing mass-loss, it is likely that this evolved donor is not in thermal equilibrium, and could thus be significantly inflated.

In Fig. 9, we show the orbital period required for a donor to fill its Roche lobe. The black curves show the maximum orbital period for which an isolated brown dwarf of a given mass has a radius larger than the implied Roche radius for a secondary with the dynamical mass and orbital period measured for the two systems. The shaded area under the curves indicates the parameter space consistent with RLOF. The dynamical masses that we inferred in the previous section have large uncertainties; however, they are consistent with RLOF being the dominant physical mechanism driving the accretion.

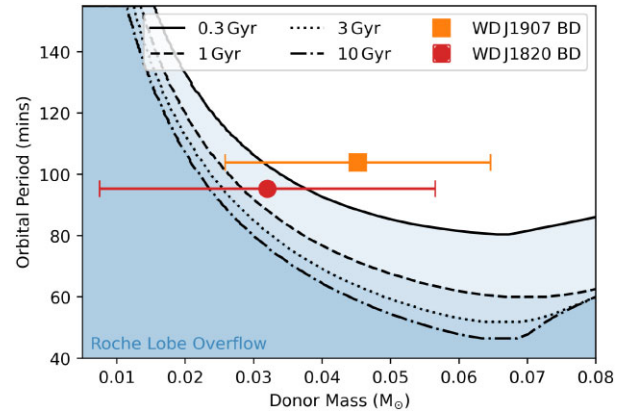


Figure 9. The orbital period required to achieve RLOF, as a function of donor mass. Here, it is assumed that the donor is a brown dwarf and that its mass follows the brown dwarf mass–radius relation. In black, we adopt the M – R relation of Marley et al. (2021) for four brown dwarf ages; 0.3, 1, 3, and 10 Gyr. The shaded region beneath each curve indicates the orbital periods for which the secondary Roche lobe would be smaller than an isolate brown dwarf radius, at which point RLOF is expected to take place. The data points show the measured orbital period and inferred dynamical brown dwarf mass for WDJ1820 (red circle) and WDJ1907 (orange square). We find that both systems have a dynamical mass and radius consistent with a brown dwarf donor filling its Roche lobe. The error bars in dynamical mass are those that were derived in Section 3.3. The error bars on the period are too small to be seen.

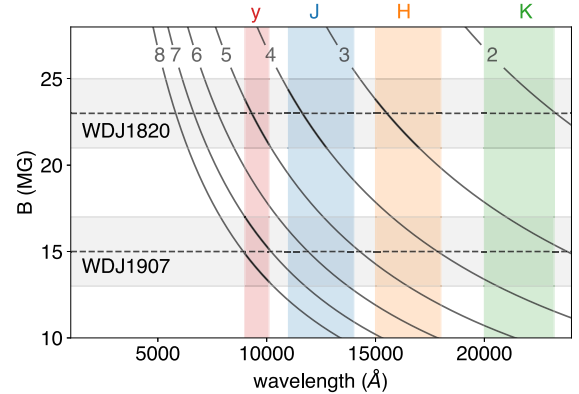


Figure 10. Central wavelengths of the first eight cyclotron harmonics for magnetic field strengths within the range measured for the two systems presented in this work. If we take the average magnetic field strength of WDJ1907 (15 MG), we find that the observed y -excess can be explained as the 7th or 8th cyclotron harmonics (the magnetic field at the pole can be a bit stronger, up to twice as much but likely less than that). For WDJ1820, which has a measured magnetic field strength of 23 MG, the observed excesses in y , J , and H can be explained by the 5th, 4th, and 3rd, harmonics, respectively.

4.2 Cyclotron emission

In the case of WDJ1820, the two epochs of J -band photometry show 1.5 mag of variability. In Section 3.4, we use the dimmer epoch in J band to constrain the temperature of the brown dwarf donor to be less than about 1100 K (see also Fig. 6 and Table 3). The brighter epoch from UKIDSS shows a strong excess in all three NIR bands J , H , and K_s due to cyclotron emission. In Fig 10, it can be seen that this excess is consistent with emission at the 2nd, 3rd, and 4th cyclotron harmonics for WDJ1820, which has an inferred magnetic field of 24 MG.

To estimate the accretion luminosity emitted through cyclotron cooling, we extract the excess flux in the J , H , and K_s bands. For WD J1820, we remove the best-fitting WD+BD model from the measured JHK_s photometry in Fig. 6. We find fluxes in the J , H , and K_s bands of 2.4×10^{-14} , 2.2×10^{-14} , and 3.3×10^{-15} erg/s/cm², respectively. The summed cyclotron flux is thus 5×10^{-14} erg/s/cm². This is over an order of magnitude larger than the integrated flux measured in the 0.25–10.0 keV band with *XMM-Newton* (see Table 5). However, we note that both the X-ray and NIR integrated fluxes are lower limits, and more observations would be needed to characterize the total accretion-induced luminosity at EUV and optical/NIR wavelengths.

For WD J1907, we identify an excess in PS1- y , which we also interpret as evidence of cyclotron emission. In this case, we only have one J -band epoch, and no available photometry at longer wavelengths. None the less, the J -band epoch provides a stringent constraint on the temperature and radius of donor, suggesting that the donor must be a brown dwarf cooler than 1000 K, consistent with a mid-late T-dwarf of at least type T6 (Faherty et al. 2016). This reveals an excess in PS1- y of at least 0.5 mag. In Fig. 10, we show the central wavelengths of the cyclotron harmonics for a range of magnetic field strengths. At the measured magnetic field strength of 15 MG, the y -excess would be consistent with emission from the 7th or 8th cyclotron harmonics. Given that we only have evidence of a significant excess in one passband, we do not provide an estimate of the cyclotron flux, but future time-series photometric or spectroscopic observations at optical and NIR wavelengths would allow to robustly constrain the cyclotron flux.

4.3 Evolutionary status

Angular momentum losses after the period bounce are often assumed to be driven by gravitational wave emission only. As the binary evolves after the period minimum, the angular momentum losses are driving the ongoing mass transfer, keeping the brown dwarf radius close to the Roche radius. Given an assumption on the value of the angular momentum change in the binary, $\dot{J}(t)$, the evolution of the period and average accretion rate with time can be calculated, as well as the evolution of the donor mass (Deloye et al. 2007; Knigge et al. 2011). In Fig. 11, we plot the evolution assuming that \dot{J} is governed only by gravitational waves emission (\dot{J}_{GR}); additionally, to show the effect of enhanced losses by other mechanisms (like for example residual magnetic braking), we also show the evolution assuming \dot{J} to be larger by 1.5 and 2 times with respect to \dot{J}_{GR} . The shaded bands in the figure show the 1σ confidence measurements on the periods of the two bouncers as measured via the H α emission. Assuming only gravitational waves losses, we can see that to reach the current periods, the two systems would have evolved past the period minimum at least 3 Gyr ago for WD J1820, and about 5 Gyr ago for WD J1907. The predicted donor masses at this evolutionary stage are about $0.04 M_{\odot}$ for both systems, consistent with the dynamical masses we derived in Section 4.1.1.

At this point in the evolution, the expected accretion rate is approximately $\approx 10^{-11.5} M_{\odot} \text{ yr}^{-1}$ for both systems. The temperature of the white dwarf accretor has been used before as a proxy for the secular accretion rate in CVs (Townesley & Bildsten 2002, 2003, 2004, 2005; Townesley & Gänsicke 2009). In Fig. 12 we show the behaviour of Equation 2 of Townesley & Gänsicke (2009), which provides a predicted accretion rate for a given white dwarf temperature for a typical CV. Given the effective temperatures of our systems, the predicted accretion rate is on the order $10^{-11} M_{\odot} \text{ yr}^{-1}$. This is broadly

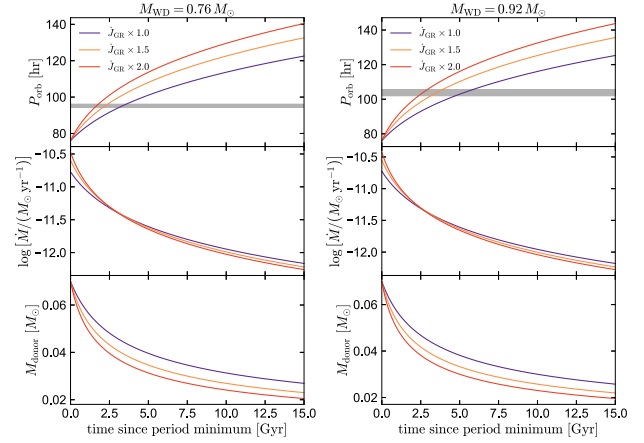


Figure 11. Predicted evolution of the period, accretion rate and donor mass for the two systems, WD J1820 (left) and WD J1907 (right), as a function of time after the period bounce. The calculation assumes that the angular momentum loss is driven by gravitational wave emission only (\dot{J}_{GR} , dark purple lines), or that there is an enhanced angular momentum loss, parametrized as $1.5 \times \dot{J}_{\text{GR}}$ (ochra lines) and as $2 \times \dot{J}_{\text{GR}}$ (red lines). The shaded grey region indicates the 1σ confidence measurements of the two periods.

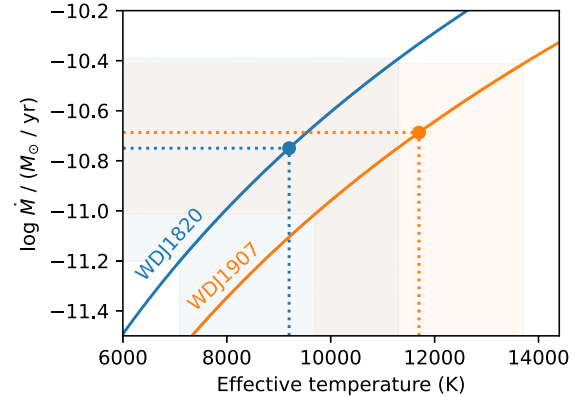


Figure 12. Accretion rate as a function of white dwarf effective temperature as predicted by equation 2 of Townesley & Gänsicke (2009). The predicted accretion rate for both systems presented in this work are around $10^{-11} M_{\odot} \text{ yr}^{-1}$, 3 dex higher than that measured in the *XMM-Newton* observations. However, as discussed in Section 4.2, cyclotron emission in the near-infrared accounts for at least an order of magnitude more accretion-induced luminosity; additionally, we might have caught these systems in a low state, in which their accretion rate is much lower than average.

consistent with the accretion rate predicted by the evolutionary models in Fig. 11, given the measured periods.

The predicted accretion rates are around 2.5 dex higher than measured via our X-ray analysis (see Table 5). These measured low rates could indicate that the accretion is instead driven by weak winds from the brown dwarfs (Schreiber et al. 2023), and not by RLOF. However, as we discussed in Section 3.5.3, the measured X-ray accretion rate is formally a lower limit, as the accretion-induced luminosity could be emitted at other wavelengths and through cyclotron emission. We do have strong evidence of cyclotron emission (see Section 4.2), consistent with the first few cyclotron harmonics. This suggests that some of the accretion power is being radiated in the NIR through cyclotron cooling, especially

Table 6. Physical parameters of the known magnetic period bouncers candidates and of the two newly discovered long-period polars presented in this work. We include the following parameters: distance (d), mean surface magnetic field strength (B_{WD}), orbital period (P_{orb}), X-ray luminosity (L_X), and spectral type of the donor (SpT_{don}). The right-pointing arrows in the donor spectral type column indicate an upper limit on the spectral type, i.e. consistent with the quoted spectral type or later.

	d (pc)	B_{WD} (MG)	P_{orb} (min)	L_X (10^{29} erg s $^{-1}$)	SpT _{don}	Ref.
EF Eri	160	20	81	2	M9→	(1, 2)
SDSS 1250	132	20	87	1.6 ± 0.3	M8	(3, 4)
V379 Vir	155	7	88	3.2 ± 0.5	L5–L8	(3, 4)
SDSS 1514	181	36	89	$3.2^{+3.6}_{-2.7}$	L3	(3, 4)
SMSS J1606	108	30	92	–	L8→	(5)
1eRASS J05472	132	>10	94	1.8 ± 1.0	M6→	(6)
WD J1820	213	24	95	0.3 ± 0.1	T5→	This work
WD J1907	243	15	104	1.9 ± 0.3	T6→	This work
ZTF 0146	56	89	123	–	T9→	(7)

Note. References: (1) Ferrario, Bailey & Wickramasinghe (1996), (2) Schwöpe et al. (2007), (3) Breedt et al. (2012), (4) Muñoz-Giraldo et al. (2023), (5) Kawka et al. (2021), (6) Rodriguez et al. (2024), (7) Guidry et al. (2021).

for WD J1820, for which the cyclotron emission accounts for at least an order of magnitude more accretion-powered flux compared to the X-ray. Time-series NIR spectroscopy and photometry would be required to better constrain the NIR accretion-induced luminosity. Also, as the case of EF Eri shows, we might have caught these systems in a low state, and their average accretion rate might be higher, as hinted by their surface temperatures.

4.4 Currently known candidates

We list all the known candidate and confirmed magnetic period bouncers from the literature and this work in Table 6. All the objects in the table are characterized by ongoing accretion, confirmed through the detection of X-ray emission or of cyclotron emission, and very late-type companions. The low-mass donors of these systems have either no or very weak coronal X-ray emission, and therefore the detected X-rays are enough to confirm accretion.

The most well-known system is EF Eridani (EF Eri). It was first detected in X-rays in the 1980s with the *HEAO 1* and *Einstein* observatories (White 1981), and it looked like a prototypical polar. In 1997, however, EF Eri fell into a low state (Wheatley & Ramsay 1998), from which it emerged in late 2022. *XMM-Newton* observations in its low state (Schwöpe et al. 2007) measured an X-ray luminosity $L_X = 2 \times 10^{29}$ erg s $^{-1}$, about 3 dex lower than in the high state. The plasma temperature was also found to be significantly lower at 2.0 keV, compared to 10 keV in the high state. The white dwarf accretor has a temperature of about 10 000 K, but the system shows a variable excess in the UV, which has been modelled as a 20 000 K hotspot (Szkody et al. 2006; Schwöpe et al. 2007). The period of EF Eri is very close to the period minimum (81 min; Beuermann et al. 2000), but its nature as period bouncer is still unclear, as the donor has not been confirmed to be sub-stellar. EF Eri shows IR variability due to cyclotron emission and the minimum in the *J* band has been used to constrain the contribution from the companion. Based on this constraint, Schwöpe & Christensen (2010) suggested that the donor is a sub-stellar object; however, the revised distance obtained with *Gaia* DR3 increased the estimated absolute magnitude of the donor to above the sub-stellar limit (Muñoz-Giraldo et al. 2023).

SDSS J125044.42+154957.4 (SDSS 1250) was found in a cross-match between SDSS and the UKIDSS to have a late M-dwarf companion (Breedt et al. 2012), which shows variable H α on the orbital period due to irradiation. Accretion in this system was confirmed by the detection of X-rays from the all-sky survey eROSITA (Predehl et al. 2021; Muñoz-Giraldo et al. 2023). Again, the low-accretion rate and late-type of the donor indicate that this system is either moving toward the period minimum or is a period bouncer.

SMSS J1606–1000 was discovered among a selection of blue objects from the SkyMapper survey (Kawka et al. 2021); phase-resolved optical spectroscopy reveals a 30 MG magnetic white dwarf with H α and H β emission varying in radial velocity with an orbital period of 92 min. An SED analysis of near-IR data constrains the companion to be later than a L8 brown dwarf, and shows the presence of cyclotron emission. The system looks quite similar to the two objects analysed in this paper, although no X-ray observations are available.

SDSS J151415.65+074446.5 (SDSS 1514) was also discovered in a cross-match between SDSS and UKIDSS (Breedt et al. 2012), while SDSS J121209.31+013627.7 (V379 Vir) was detected as an X-ray source with *Swift* (Schmidt et al. 2005b; Burleigh et al. 2006). They have very similar periods, slightly longer than the period minimum, and in both systems, IR photometry strongly constrains the contribution of the donor, indicating the presence of a brown dwarf companion (Farihi, Burleigh & Hoard 2008; Breedt et al. 2012). The sub-stellar nature of the donors, contrary to the previous two system, exclude the possibility that these two systems may still be moving toward the period minimum, and characterizes them as period bouncers. They both were later targeted with *XMM-Newton* (Stelzer et al. 2017; Muñoz-Giraldo et al. 2023), showing plasma temperatures of $kT \approx 3$ keV and X-ray luminosities in of $L_X \sim 10^{29}$ erg s $^{-1}$, similar to the new systems presented in this work.

1eRASS J054726.9+132649 (1eRASS J0547) was recently discovered by Rodriguez et al. (2024) in a cross-match between the eRASS1 source catalogue (Merloni et al. 2024) and *Gaia*. This system has an orbital period of 94 min, as measured via a Lomb–Scargle periodogram analysis of the ZTF *g*- and *r*-band light curves. The authors do not provide a measurement of the magnetic field or donor temperature. However, the presence of resolved Zeeman splitting in the optical spectrum implies a magnetic field strength of $B \gtrsim 1$ MG, but the absence of a disc implies $B \gtrsim 10$ MG. For the donor, the authors rule out effective temperatures in excess of ≈ 2900 K, or spectral types earlier than M6.

To this list, we add ZTF J014635.73+491443.0 (ZTF J0146), which has not yet been targeted by X-ray observations, but which shows ongoing accretion thanks to strong cyclotron emission in the optical. The candidate polar was identified by Guidry et al. (2021) in the ZTF archive thanks to its large optical modulation due to varying cyclotron emission on its 123-min orbital period. WISE infrared photometry places stringent constraints on the donor: W1 and W2 are consistent with the white dwarf spectrum, allowing only a ~ 500 K or cooler brown dwarf to hide at these wavelengths (Hakala et al. 2022). The object has fallen into three slew observations with *XMM-Newton*, which provide an upper limit on the X-ray flux of $F_X < 2.2 \times 10^{-12}$ erg s $^{-1}$ cm $^{-2}$. At a distance of only 56 pc, the limiting luminosity is then $L_X < 8 \times 10^{29}$ erg s $^{-1}$. This is consistent with the observations of the two new polars presented in this work, which have 100-min periods and X-ray luminosities less than 10^{29} erg s $^{-1}$. We thus expect that a reasonably deep pointing of ≈ 50 ks with *XMM-Newton* should be sufficient to detect and

characterize X-ray emission at this system in order to confirm it as a low accretion rate polar.

We would also like to mention that recently, Galiullin et al. (2024) discovered an eclipsing period bouncer in a cross-match between the eRosita and the ZTF catalogue, SRGeJ041130.3+685350. The absence of a disc in this system, together with a soft X-ray spectrum, hint to the white dwarf accretor being magnetic; however, we do not include it in our list as the evidence is not conclusive for the primary to be a magnetic white dwarf.

4.5 Space density

The empirical space density of CVs is a vital diagnostic in characterizing the population and evolution of CVs. Evolutionary models have predicted larger space densities of CVs than is currently observed (Breedt et al. 2012; Pala et al. 2017; Inight et al. 2023). In particular, it has been predicted that 40–70 per cent of CVs should have evolved through the period bounce (Kolb 1993; Goliash & Nelson 2015; Belloni et al. 2020), but this large predicted population has been mostly elusive so far. Many observational studies have characterized the space density of CVs, including the different sub-types (Pala et al. 2017; Inight et al. 2023; Rodriguez et al. 2024). Inight et al. (2023) recently provided an empirical determination of the space density of CVs, finding that only 3.4 per cent of known CVs have undergone a period bounce; in contrast, Rodriguez et al. (2024) found a higher value of 25 per cent. Even this higher estimate is inconsistent with predictions from CV evolutionary models. In the following, we consider the implications for space density from the discoveries presented in this work.

The *Gaia* white dwarf catalogue has fairly uniform sky coverage within ≈ 200 pc. Both of the systems studied in this work have distances around 250 pc. The 4XMM-DR13 source catalogue includes serendipitously detected sources across the 1328 sq. deg of sky that has been subjected to targeted *XMM-Newton* observations. This sky coverage corresponds to 3.2 per cent of the total sky area. We can thus make a crude estimate that the total sky should contain $2/0.032 = 62 \pm 44$ period-bounce polars with comparable X-ray luminosity to the ones presented here, where the uncertainty is estimated from Poisson statistics for the sample size of $2 \pm \sqrt{2}$. We use this simple estimate and associated uncertainty to calculate the space density of period-bounce polars. Both polars presented in this study are within 250 pc, so we adopt this as the limiting distance. In characterizing the space density of CVs, Pretorius et al. (2007) adopted three scale heights for different evolutionary stages: 120, 260, and 450 pc for long-period systems ($P_{\text{orb}} > 3$ h), ‘normal’ short-period systems ($P_{\text{orb}} < 3$ h) and period bouncers, respectively. We adopt the latter scale height, both because we are interested in calculating the space density of period bounce magnetic systems, and because it is the most conservative of the three. For the scale height, h , of the volume distribution of a sample in the Galactic disc, the density of systems as a function of the height, z , off the Galactic plane is described by

$$\rho(z) = \rho_0 e^{-|z|/h},$$

where ρ_0 is the space density. The space density is estimated by dividing the sample size by the limiting volume. The effective volume, given the scale height is given by the expression

$$V_{\text{eff}} = \int_0^{2\pi} \int_0^{\pi} \int_0^R \rho(r \sin \theta) r^2 \sin \theta \, dr \, d\theta \, d\phi,$$

where R is the limiting distance. For a scale height of 450 pc and an expected sample size of 62 ± 44 , we estimate the space density of period-bounce magnetic CVs to be $\rho_0 = (1.3 \pm 0.9) \times 10^{-6} \text{ pc}^{-3}$.

Space density estimates for the entire population of CVs (both magnetic and non-magnetic) have been found to be $\rho_0 = 4.8 \times 10^{-6} \text{ pc}^{-3}$ (Pala et al. 2020) and $\rho_0 = 5.8 \times 10^{-6} \text{ pc}^{-3}$ (Inight et al. 2023), for assumed Galactic scale heights of 260 and 280 pc, respectively, where the assumed Galactic scale height represents a major uncertainty in the estimates of space densities. In the case of magnetic CVs, Pretorius, Knigge & Schwöpe (2013) estimated the space density based on the X-ray flux-limited ROSAT Bright Survey (RBS; Schwöpe et al. 2000). The authors found a combined space density of magnetic CVs, including polars and IPs to be $\rho_0 = 8_{-2}^{+4} \times 10^{-7} \text{ pc}^{-3}$. Rodriguez et al. (2024) also provide an estimate of the space density of all magnetic CVs to be $\rho_0 = 1.3 \pm 0.5 \times 10^{-6} \text{ pc}^{-3}$. This is comparable to the estimate of space density we provide in this work for the two period bounce magnetic CVs detected serendipitously with *XMM* alone, suggesting that the evolved magnetic CVs may account for (50 ± 40) per cent of the total population of magnetic CVs. The low numbers implies a large uncertainty in our estimate; however, this is consistent with the predicted 40–70 per cent from evolutionary models.

We now briefly consider whether our estimated space density of period-bounce magnetic CVs is consistent with the detections or lack of thereof of such systems in all-sky X-ray surveys. The all-sky ROSAT X-ray survey had a flux limit of $F_X \gtrsim 3 \times 10^{-13} \text{ erg s}^{-1} \text{ cm}^{-2}$ in the 0.12–2.48 keV band (Boller et al. 2016), whilst the systems studied in this work have X-ray fluxes of $F_X \sim 10^{-15} \text{ erg s}^{-1} \text{ cm}^{-2}$ and $F_X \sim 10^{-14} \text{ erg s}^{-1} \text{ cm}^{-2}$, for WD J1820 and WD J1907, respectively (see Table 5). In order for both systems to have been detected by ROSAT, they would need to be located an order of magnitude closer, i.e. at ≈ 10 –40 pc. From our space density estimate, the volume defined within 25 pc of the Sun should contain $\approx 0.3 \pm 0.1$ such systems. Thus, our estimated space density is consistent with the non-detection of such systems in ROSAT. For eROSITA, the limiting flux in the 0.2–2.3 keV band has been shown to be $F_X \gtrsim 5 \times 10^{-14} \text{ erg s}^{-1} \text{ cm}^{-2}$ (Merloni et al. 2024). At this limiting flux, the systems presented in this work should be detectable up to distances of ≈ 30 –100 pc, considering the measured X-ray fluxes for WD J1820 and WD J1907. Within this volume, and accounting for the fact that publicly available eROSITA data covers 50 per cent of the sky, our calculation predicts a sample of 0–2 period-bounce magnetic CVs detectable with eROSITA. Rodriguez et al. (2024) recently reported the detection of two magnetic period-bouncers in the eRASS1 catalogue; one known magnetic period bouncer (SDSS J1250) and one newly discovered (1eRASS J0547, see Table 6). This sample size is consistent with the estimate based on the two serendipitous discoveries presented in this work.

5 CONCLUSIONS

In this work, we have presented two new magnetic period-bounce CVs, discovered serendipitously via their X-ray emission reported in the 4XMM-DR13 source catalogue, and their membership of the *Gaia* white dwarf catalogue. We obtained time-series optical spectroscopy to characterize the nature of the white dwarf candidates, confirming these as highly magnetized white dwarfs with irradiated companions. The presence of X-ray emission confirms these as accreting white dwarfs, whilst near-infrared photometry demonstrates that the white dwarfs are accreting from cool brown dwarf companions and show variable cyclotron emission. The discovery of these two systems, significantly increases the sample of period-

bounce magnetic CVs with confirmed sub-stellar companions. We have provided a summary of the characteristics of all known magnetic period bouncers in Section 4.4.

The two new systems studied in this work have periods of 95 and 104 minutes. Such periods are expected to take $\sim 3\text{--}5$ Gyr to reach after the period minimum, characterizing these as the most evolved period-bounce magnetic CVs with detected X-ray emission. The two systems were discovered via their X-ray emission, published in the 4XMM-DR13 source catalogue. Given that the source catalogue includes sources detected across just 3 per cent of the sky, the discovery of two systems in such a small fraction of sky offers the tantalising possibility that the space density of period-bounce CVs may be significantly higher than current empirical determinations have suggested. It has long been predicted that period-bounce CVs should account for 40–70 per cent of the population, but current studies have placed the estimates at closer to 3–25 per cent (Muñoz-Giraldo et al. 2024; Rodriguez et al. 2024). Our newly discovered systems effectively double the inferred space density of magnetic, period-bounce CVs, possibly resolving this long-standing discrepancy, at least for the magnetic sample. This result suggests that a large number of similar systems could be detected with targeted *XMM* observations, or all-sky X-ray surveys such as eROSITA. We also detect infrared variability, evidence of cyclotron emission, in one of the two systems. This suggests that all-sky infrared time-domain surveys such as the Spectro-photometer for the History of the Universe, Epoch of Reionization, and Ices Explorer (SPHEREx; Crill et al. 2020), and even the *Nancy Grace Roman Space Telescope* (Spergel et al. 2015), with its much smaller footprint but higher sensitivity, may be effective discovery machines for identifying more of these systems through IR variability to be followed up with optical and X-ray observations.

ACKNOWLEDGEMENTS

We thank Matthias Schreiber for his insightful comments. Support for this work was provided by NASA through the NASA Hubble Fellowship grant HST-HF2-51527.001-A awarded by the Space Telescope Science Institute, which is operated by the Association of Universities for Research in Astronomy, Inc., for NASA, under contract NAS5-26555. Support for this work was provided by NASA through Chandra Award Number GO4-25014X issued by the Chandra X-ray Center, which is operated by the Smithsonian Astrophysical Observatory for and on behalf of NASA under contract NAS8-03060. IC was also supported by NASA through grants from the Space Telescope Science Institute, under NASA contracts NASA.22K1813, NAS5-26555, and NAS5-03127. This project has received funding from the European Research Council (ERC) under the European Union’s Horizon 2020 research and innovation programme (grant agreement no. 101020057). This research was supported in part by grant NSF PHY-1748958 to the Kavli Institute for Theoretical Physics (KITP). PJW acknowledges support from the UK Science and Technology Facilities Council (STFC) through consolidated grants ST/T000406/1 and ST/X001121/1. RA was supported by NASA through the NASA Hubble Fellowship grant #HST-HF2-51499.001-A awarded by the Space Telescope Science Institute, which is operated by the Association of Universities for Research in Astronomy, Incorporated, under NASA contract NAS5-26555.

This research has made use of data obtained from the 4XMM *XMM–Newton* Serendipitous Source Catalogue compiled by the 10 institutes of the *XMM–Newton* Survey Science Centre selected by ESA. This work has made use of data from the European Space Agency (ESA) mission *Gaia* (<https://www.cosmos.esa.int/gaia>),

processed by the *Gaia* Data Processing and Analysis Consortium (DPAC, <https://www.cosmos.esa.int/web/gaia/dpac/consortium>). Funding for the DPAC has been provided by national institutions, in particular the institutions participating in the *Gaia* Multilateral Agreement. The Pan-STARRS1 Surveys (PS1) and the PS1 public science archive have been made possible through contributions by the Institute for Astronomy, the University of Hawaii, the Pan-STARRS Project Office, the Max-Planck Society and its participating institutes, the Max Planck Institute for Astronomy, Heidelberg and the Max Planck Institute for Extraterrestrial Physics, Garching, The Johns Hopkins University, Durham University, the University of Edinburgh, the Queen’s University Belfast, the Harvard–Smithsonian Center for Astrophysics, the Las Cumbres Observatory Global Telescope Network Incorporated, the National Central University of Taiwan, the Space Telescope Science Institute, the National Aeronautics and Space Administration under grant no. NNX08AR22G issued through the Planetary Science Division of the NASA Science Mission Directorate, the National Science Foundation grant no. AST-1238877, the University of Maryland, Eotvos Lorand University (ELTE), the Los Alamos National Laboratory, and the Gordon and Betty Moore Foundation. This work is based in part on data obtained as part of the UKIDSS. This research made use of hips2fits,⁴ a service provided by CDS, and of ASTROPY (Astropy Collaboration 2013).

DATA AVAILABILITY

Upon request, TC will provide the reduced WIRC and Keck/LRIS data. The data from *Gaia*, Pan-STARRS, UKIDSS, and *XMM–Newton* are already in the public domain, and they are readily accessible in the *Gaia*, Pan-STARRS, and UKIDSS catalogues, and in the *XMM–Newton* Science Archive.

REFERENCES

- Arnaud K. A., 1996, in Jacoby G. H., Barnes J., eds, ASP Conf. Ser. Vol. 101, Astronomical Data Analysis Software and Systems V. Astron. Soc. Pac., San Francisco, p. 17
- Asplund M., Grevesse N., Sauval A. J., Scott P., 2009, *ARA&A*, 47, 481
- Astropy Collaboration, 2013, *A&A*, 558, A33
- Bagnulo S., Landstreet J. D., 2019, *A&A*, 630, A65
- Bagnulo S., Landstreet J. D., 2020, *A&A*, 643, A134
- Bédard A., Bergeron P., Brassard P., Fontaine G., 2020, *ApJ*, 901, 93
- Bellm E. C. et al., 2019, *PASP*, 131, 018002
- Belloni D., Schreiber M. R., Pala A. F., Gänsicke B. T., Zorotovic M., Rodrigues C. V., 2020, *MNRAS*, 491, 5717
- Beuermann K., Thomas H. C., 1990, *A&A*, 230, 326
- Beuermann K., Wheatley P., Ramsay G., Euchner F., Gänsicke B. T., 2000, *A&A*, 354, L49
- Boller T., Freyberg M. J., Trümper J., Haberl F., Voges W., Nandra K., 2016, *A&A*, 588, A103
- Breedt E., Gänsicke B. T., Girven J., Drake A. J., Copperwheat C. M., Parsons S. G., Marsh T. R., 2012, *MNRAS*, 423, 1437
- Buchner J., 2016, Astrophysics Source Code Library, record ascl:1610.011
- Buchner J., 2019, *PASP*, 131, 108005
- Burleigh M. R. et al., 2006, *MNRAS*, 373, 1416
- Camisassa M., Fuentes J. R., Schreiber M. R., Rebassa-Mansergas A., Torres S., Raddi R., Dominguez I., 2024, *A&A*, 691, L21
- Cardelli J. A., Clayton G. C., Mathis J. S., 1989, *ApJ*, 345, 245
- Chambers K. C. et al., 2016, preprint ([arXiv:1612.05560](https://arxiv.org/abs/1612.05560))
- Crill B. P. et al., 2020, in Lystrup M., Perrin M. D., eds, Proc. SPIE Conf. Ser. Vol. 11443, Space Telescopes and Instrumentation 2020: Optical, Infrared, and Millimeter Wave. SPIE, Bellingham, p. 1144301

⁴<https://alaska.cds.unistra.fr/hips-image-services/hips2fits>

- Cunningham T., Wheatley P. J., Tremblay P.-E., Gänsicke B. T., King G. W., Toloza O., Veras D., 2022, *Nature*, 602, 219
- Deloye C. J., Taam R. E., Winisdoerffer C., Chabrier G., 2007, *MNRAS*, 381, 525
- Eggleton P. P., 1983, *ApJ*, 268, 368
- Faherty J. K. et al., 2016, *ApJS*, 225, 10
- Farihi J., Burleigh M. R., Hoard D. W., 2008, *ApJ*, 674, 421
- Faulkner J., 1971, *ApJ*, 170, L99
- Ferrario L., Bailey J., Wickramasinghe D., 1996, *MNRAS*, 282, 218
- Ferrario L., de Martino D., Gänsicke B. T., 2015, *Space Sci. Rev.*, 191, 111
- Filor L. W. et al., 2024, preprint (arXiv:2412.11273)
- Gabriel C. et al., 2004, in Ochsenein F., Allen M. G., Egret D., eds, ASP Conf. Ser. Vol. 314, *Astronomical Data Analysis Software and Systems (ADASS) XIII*. Astron. Soc. Pac., San Francisco, p. 759
- Gaia Collaboration, 2016, *A&A*, 595, A1
- Gaia Collaboration, 2018, *A&A*, 616, A1
- Gaia Collaboration, 2023, *A&A*, 674, A1
- Galiullin I. et al., 2024, *MNRAS*, 528, 676
- Gentile Fusillo N. P. et al., 2019, *MNRAS*, 482, 4570
- Gentile Fusillo N. P. et al., 2021, *MNRAS*, 508, 3877
- Goliash J., Nelson L., 2015, *ApJ*, 809, 80
- Green G. M., Schlafly E., Zucker C., Speagle J. S., Finkbeiner D., 2019, *ApJ*, 887, 93
- Guidry J. A. et al., 2021, *ApJ*, 912, 125
- Güver T., Özel F., 2009, *MNRAS*, 400, 2050
- Hakala P., Parsons S. G., Marsh T. R., Gänsicke B. T., Ramsay G., Schwöpe A., Hermes J. J., 2022, *MNRAS*, 513, 3858
- Howell S. B., Walter F. M., Harrison T. E., Huber M. E., Becker R. H., White R. L., 2006, *ApJ*, 652, 709
- Inight K. et al., 2023, *MNRAS*, 524, 4867
- Isern J., García-Berro E., Külebi B., Lorén-Aguilar P., 2017, *ApJ*, 836, L28
- Kaastra J. S., Bleeker J. A. M., 2016, *A&A*, 587, A151
- Kafka S., Hoard D. W., 2009, *PASP*, 121, 1352
- Kawka A. et al., 2021, *MNRAS*, 507, L30
- Kemic S. B., 1974, *ApJ*, 193, 213
- Knigge C., Baraffe I., Patterson J., 2011, *ApJS*, 194, 28
- Kolb U., 1993, *A&A*, 271, 149
- Kuijpers J., Pringle J. E., 1982, *A&A*, 114, L4
- Kylafis N. D., Lamb D. Q., 1982, *ApJS*, 48, 239
- Livio M., Pringle J. E., 1994, *ApJ*, 427, 956
- Marley M. S. et al., 2021, *ApJ*, 920, 85
- Martin D. C. et al., 2005, *ApJ*, 619, L1
- Merloni A. et al., 2024, *A&A*, 682, A34
- Muñoz-Giraldo D., Stelzer B., de Martino D., Schwöpe A., 2023, *A&A*, 676, A7
- Muñoz-Giraldo D., Stelzer B., Schwöpe A., 2024, *A&A*, 687, A305
- Oke J. B. et al., 1995, *PASP*, 107, 375
- Paczynski B., 1981, *Acta Astron.*, 31, 1
- Pala A. F. et al., 2017, *MNRAS*, 466, 2855
- Pala A. F. et al., 2020, *MNRAS*, 494, 3799
- Pala A. F. et al., 2022, *MNRAS*, 510, 6110
- Pala A. F., Schmidtobreick L., Tappert C., Gänsicke B. T., Mehner A., 2018, *MNRAS*, 481, 2523
- Parsons S. G., Gänsicke B. T., Schreiber M. R., Marsh T. R., Ashley R. P., Breedt E., Littlefair S. P., Meusinger H., 2021, *MNRAS*, 502, 4305
- Patterson J., Raymond J. C., 1985, *ApJ*, 292, 535
- Pence W. D., Snowden S. L., Mukai K., Kuntz K. D., 2001, *ApJ*, 561, 189
- Perley D. A., 2019, *PASP*, 131, 084503
- Phillips M. W. et al., 2020, *A&A*, 637, A38
- Predehl P. et al., 2021, *A&A*, 647, A1
- Pretorius M. L., Knigge C., O'Donoghue D., Henry J. P., Gioia I. M., Mullis C. R., 2007, *MNRAS*, 382, 1279
- Pretorius M. L., Knigge C., Schwöpe A. D., 2013, *MNRAS*, 432, 570
- Ramsay G., Cropper M., Wu K., Mason K. O., Córdoba F. A., Priedhorsky W., 2004, *MNRAS*, 350, 1373
- Reimers D., Hagen H. J., 2000, *A&A*, 358, L45
- Reimers D., Hagen H. J., Hopp U., 1999, *A&A*, 343, 157
- Ritter H., Kolb U., 2003, *A&A*, 404, 301
- Rodriguez A. C. et al., 2024, *PASP*, 137, 014201
- Sarmiento M. H., Arévalo M., Arviset C., Baines D., Colomo E., Loiseau N., Merin B., Salgado J., 2019, in Molinaro M., Shortridge K., Pasian F., eds, ASP Conf. Ser. Vol. 521, *Astronomical Data Analysis Software and Systems XXVI*. Astron. Soc. Pac., San Francisco, p. 104
- Schmidt G. D. et al., 2005a, *ApJ*, 630, 1037
- Schmidt G. D., Szkody P., Silvestri N. M., Cushing M. C., Liebert J., Smith P. S., 2005b, *ApJ*, 630, L173
- Schmidt G. D., Szkody P., Smith P. S., Silber A., Tovmassian G., Hoard D. W., Gänsicke B. T., de Martino D., 1996, *ApJ*, 473, 483
- Schreiber M. R., Belloni D., Gänsicke B. T., Parsons S. G., Zorotovic M., 2021, *Nat. Astron.*, 5, 648
- Schreiber M. R., Belloni D., van Roestel J., 2023, *A&A*, 679, L8
- Schwöpe A. D., Brunner H., Hambaryan V., Schwarz R., 2002, in Gänsicke B. T., Beuermann K., Reinsch K., eds, ASP Conf. Ser. Vol. 261, *The Physics of Cataclysmic Variables and Related Objects*. Astron. Soc. Pac., San Francisco, p. 102
- Schwöpe A. D., Christensen L., 2010, *A&A*, 514, A89
- Schwöpe A. D., Nebot Gomez-Moran A., Schreiber M. R., Gänsicke B. T., 2009, *A&A*, 500, 867
- Schwöpe A. D., Staude A., Koester D., Vogel J., 2007, *A&A*, 469, 1027
- Schwöpe A. et al., 2000, *Astron. Nachr.*, 321, 1
- Spergel D. et al., 2015, preprint (arXiv:1503.03757)
- Stelzer B., de Martino D., Casewell S. L., Wynn G. A., Roy M., 2017, *A&A*, 598, L6
- Szkody P., Harrison T. E., Plotkin R. M., Howell S. B., Seibert M., Bianchi L., 2006, *ApJ*, 646, L147
- Tout C. A., Wickramasinghe D. T., Liebert J., Ferrario L., Pringle J. E., 2008, *MNRAS*, 387, 897
- Townsley D. M., Bildsten L., 2002, *ApJ*, 565, L35
- Townsley D. M., Bildsten L., 2003, *ApJ*, 596, L227
- Townsley D. M., Bildsten L., 2004, *ApJ*, 600, 390
- Townsley D. M., Bildsten L., 2005, *ApJ*, 628, 395
- Townsley D. M., Gänsicke B. T., 2009, *ApJ*, 693, 1007
- Tremblay P. E., Bergeron P., Gianninas A., 2011, *ApJ*, 730, 128
- Turner T. J., et al. 2002, *ApJ*, 574, L123
- van Roestel J. et al., 2024, *A&A*, 696, A242
- Wade R. A., Horne K., 1988, *ApJ*, 324, 411
- Warren S. J. et al., 2007, preprint(astro-ph/0703037)
- Webb N. A. et al., 2020, *A&A*, 641, A136
- Wheatley P. J., Ramsay G., 1998, in Howell S., Kuulkers E., Woodward C., eds, ASP Conf. Ser. Vol. 137, *Wild Stars in the Old West*. Astron. Soc. Pac., San Francisco, p. 446
- White N. E., 1981, *ApJ*, 244, L85
- Wilson J. C. et al., 2003, in Iye M., Moorwood A. F. M., eds, Proc. SPIE Conf. Ser. Vol. 4841, *Instrument Design and Performance for Optical/Infrared Ground-based Telescopes*. SPIE, Bellingham, p. 451

APPENDIX A: X-RAY SPECTRAL PROPERTIES

In Tables A1 and A2 in this section we provide the 68 per cent and 90 per cent confidence limits on the X-ray properties of the two systems studied in this work. We include the integrated flux over two energy ranges, namely a soft band which we define as 0.25–2.0 keV and a broad-band defined as 0.25–10.0 keV. The two other derived X-ray properties – luminosity and accretion rate – are derived following the methodology presented in Section 3.5.

Table A1. Best-fitting X-ray properties of WD J1820. The best-fitting fluxes are computed across two spectral energy ranges using the one-temperature (APEC) model with solar abundances (Asplund et al. 2009). The 68 per cent and 90 per cent confidence intervals on the flux are derived by sampling the parameter posteriors from the X-ray fitting with BXA (Buchner 2016). From the fluxes (F_X), the X-ray luminosity (L_X) was derived using $L_X = 4\pi d^2 F_X$. The best-fitting X-ray accretion rate (\dot{M}_X) derived using $\dot{M}_X = 2L_X R_{WD}/(GM_{WD})$.

X-ray measurement	Energy (keV)	Best fit	68 per cent		90 per cent	
			Low	High	Low	High
Flux (10^{-15} erg s $^{-1}$ cm $^{-2}$)	0.25–2.0	1.44	0.91	2.04	0.53	2.40
	0.25–10.0	2.39	1.29	3.97	0.77	5.08
Luminosity (10^{28} erg s $^{-1}$)	0.25–2.0	0.74	0.47	1.05	0.27	1.23
	0.25–10.0	1.23	0.66	2.03	0.40	2.61
Accretion rate (10^{11} g s $^{-1}$)	0.25–2.0	1.10	0.69	1.56	0.40	1.83
	0.25–10.0	1.82	0.98	3.03	0.59	3.88
Accretion rate (10^{-14} M $_{\odot}$ yr $^{-1}$)	0.25–2.0	0.17	0.11	0.25	0.06	0.29
	0.25–10.0	0.29	0.16	0.48	0.09	0.62

Table A2. Similar to Table A1 but for WD J1907.

X-ray measurement	Energy (keV)	Best fit	68 per cent		90 per cent	
			Low	High	Low	High
Flux (10^{-15} erg s $^{-1}$ cm $^{-2}$)	0.25–2.0	4.83	4.05	5.76	3.58	6.39
	0.25–10.0	11.19	8.36	14.62	6.82	16.86
Luminosity (10^{28} erg s $^{-1}$)	0.25–2.0	3.17	2.66	3.78	2.35	4.20
	0.25–10.0	11.37	8.50	14.86	6.93	17.12
Accretion rate (10^{11} g s $^{-1}$)	0.25–2.0	3.22	2.71	3.84	2.39	4.26
	0.25–10.0	11.55	8.63	15.09	7.04	17.40
Accretion rate (10^{-14} M $_{\odot}$ yr $^{-1}$)	0.25–2.0	0.51	0.43	0.61	0.38	0.68
	0.25–10.0	1.83	1.37	2.39	1.12	2.76

This paper has been typeset from a $\text{\TeX}/\text{\LaTeX}$ file prepared by the author.